



Industrial Magnetic Solutions



LIFT • RETRIEVE • SEPARATE • HOLD

MASTER MAGNETICS, INC.



magnetsource.com



About Us

Founded in 1976 and located in Castle Rock, Colorado, Master Magnetics, Inc. manufactures and distributes magnets and magnetic devices for commercial, industrial and consumer use. Our large inventory and warehousing capabilities (over 15 million magnets in stock), along with two regional production and distribution facilities, ensure fast and cost-effective delivery. The Magnet Source® brand is a trademark of Master Magnetics, Inc., representing exceptional quality, expertise and customer service.

Stock and Delivery With over 15 million magnets in stock and over 3,200 part numbers, we are usually able to ship the variety and quantity of magnets that you need within 24 hours.

Permanent Magnetism Guarantee The magnetic devices in this catalog are all made from permanent magnet material. We guarantee, under normal use, that these magnets will remain magnetized or we will remagnetize them. There is an expected loss of strength of 1/2 of 1% per century.

Magnetic Strength Pull Test Methodology We rate our magnetic assemblies by pounds of pull in a vertical test. Each magnet's entire magnetic surface is tested against a 1/2" thick ground steel plate. If the item you wish to lift is thinner than 1/2", is not ground flat, or does not cover the entire magnetic surface, actual holding capacity could be much lower. Painted surfaces also tend to reduce tested strengths.

Magnetic Assemblies Created by attaching steel and/or plastic to a raw material magnet (ceramic, rare earth, flexible, etc.) in a special configuration which enhances the magnetic properties for final use in a variety of lifting, holding or retrieving applications.

Custom Assemblies and Special Orders We can custom manufacture magnetic assemblies to fit your application. A mechanical drawing and an explanation of the application are necessary in order to begin the design assistance process. Custom assemblies and some of the items in this catalog are non-stock, made-to-order items and typically considered special order items. Contact one of our magnet specialists about your custom needs.

Special Orders A 25% to 50% deposit is required for special order items. Lead times may vary. Please note that special order items are non-returnable and non-refundable.



Look for this logo next to items throughout this catalog. You'll find an in-use video of that item at our YouTube page – www.youtube.com/MasterMagnetics – and check often as additional product videos will be posted.

Table of Contents

Small Magnetic Retrieving Tools	3	Welding Magnets / Work-Holding Assemblies	23
Magnetic Contact Light / Screwdriver Magnetizers . . .	4	Ceramic & Alnico Magnetic Assemblies	24
Round Base Magnets / Rubber Covers	5	Shielded Neodymium & Alnico Assemblies	25
Round Base Magnet Assemblies	6	Alnico Holding Magnets	26
Base Magnets with Knobs	7	Separation Magnets	27
Magnetic Hooks	8-9	Plate Magnets	28-29
Neodymium Latch Magnets	10	Magnetic Sweepers	30-34
Latch & Channel Magnet Assemblies	11	Magnetic Pick Up Tools	34
Adjustable Latch & Rectangular Base Magnets	12	Magnetic Parts Trays / Gaussmeter / Pole Finders . .	35
Magnetic Tool Holders	13	Water Treatment Magnets	36
Super Latch Magnets	14	Name Badge, Picture Hanger, Clip & Hook Magnets	37
Latch & Retrieving Magnets	15	Magnetic Label Holders & Pouches	38
Holding & Retrieving Magnets	16	Magnetic Inventory Labels	39
Powerful Handle Magnets	17		
Material Transfer Magnets	18		
Magnetic Retrieving Batons	19		
Material Handling Magnets	20-21		
Gripper, Squaring & Welding Magnets	22		

Follow us online:

linkedin.com/company/master-magnetics

facebook.com/MasterMagnetics

youtube.com/MasterMagnetics

Handy for collecting dropped metal items such as screws and nuts.



Magnetic Retrieving Tools are designed to pick up small ferrous metal items that have dropped out of reach, including screws, nails, nuts, staples and small hand tools. Each tool has a powerful neodymium magnet in the tip.

Extra Long Extendable Bendable Pickup Magnet Unscrew the tip, extend and bend to reach items around corners or in tight locations. **07569B**

Extra Long Extendable Pickup Magnet Use collapsed or extended. **07567B**

Pocket Pickup Magnet Popular with mechanics. Test if objects are ferrous. **07264**

Telescoping Pickup Magnet Tool with Locking Hinge Allows access around corners or in areas where an unusual or difficult angle is necessary. **07227B, 07256**

Retractable Retrieving Magnet Bend in any direction, then use plunger to activate and deactivate magnet. **07588**

Bend-It™ Magnet Pickup Tool Bendable shaft retrieves iron objects from an exhaust manifold, factory machinery, vent or drain. **07229**

Telescoping Magnetic Pickup/Pointer with Scribe The top can be unscrewed to reveal a sharp tip for etching and marking. **07565**

Telescoping Magnetic Pickup/Pointer Doubles as a presentation pointer with a handy pocket clip attached. **07228BULK, 07568B**



Part No.	Pounds Pull	Dimensions (in)	
		Length	Extend to
07227B	5	15.0	25
07228BULK	3	6.0	25
07256	3	9.5	14
07565	3	6.0	25
07567B	10	16.0	30
07568	7	5.25	23
07569B	3	20.0	36

Part No.	Pounds Pull	Length (in)
07229	2	19.0
07264	2	5.75
07588	2	23.0

07569B



07227B

07256



07588



Contact Light / Screwdriver Magnetizers

Handy tools for shop and home use.

Magnetic Contact Light Ideal in low-light environments, this powerful magnetic assembly uses LED lights to illuminate work area. Magnetically attach to screwdriver or other small tools. Use with clip assembly and attach to brim of hat.

- Continuity circuit turns ON/OFF on contact with metal tools
- Rotation ON/OFF switch when light is attached to hat clip
- Available with or without hat clip
- Batteries included (LR521). 100,000 hrs. bulb life, 2 lumens

MTLR, MTLRW/CLP



- Twist to turn ON/OFF
- The base tilts up or down for accurate light positioning
- Comes with two extra battery packs

Part No.	Description	Dimensions (in)		
		H	W	D
MTLR	Magnetic LED Touch Light, Red, Batteries Included (1PC/BX)	0.625	1.0	0.75
MTLRW/CLIP	Magnetic LED Touch Light w/Hat Clip, Batteries Included (1 PC/BX)	1.625	1.3125	1.125



MTLRW/CLP

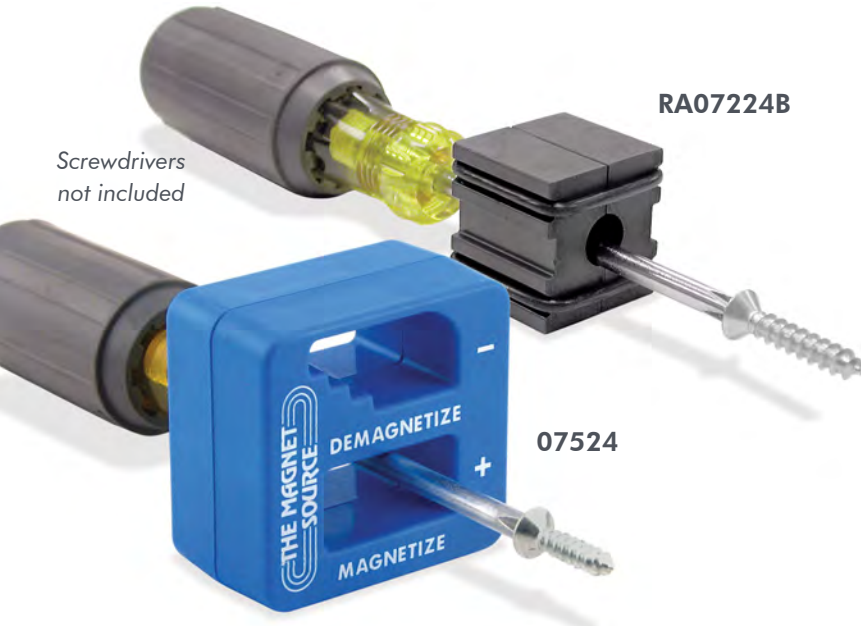
Screwdriver Magnetizer/Demagnetizers

Quickly and easily magnetize small tools so they attract screws or nuts for easy starting and removing. Insert a screwdriver or nutdriver into the hole, pull it out and it's magnetized! Perfect for do-it-yourselfers, mechanics and electricians.

RA07224B - Leave the magnetizer on the tool for extra magnetic strength. To demagnetize, pass the tool through one of the exterior channels.

07524 - Separate areas for magnetizing and demagnetizing large tools.

Part No.	Dimensions (in)		
	H	W	D
07524	2	2	1
RA07224B	1	1	1



Screwdrivers not included

07524

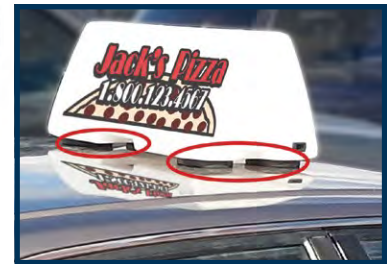
Round Base Magnets / Rubber Covers

Low cost, high power and compact design – magnetic bases are versatile in their applications.

Round base pot magnets are powerful, low profile magnets with hole in the center. Attach a hook or knob to position or hold inspection equipment, indicator gauges, lamps, signs, antennas and more. Magnetic on one side. All round base pot magnets are nickel or nickel/chrome plated for durability. For other types of plating, call one of our knowledgeable sales specialists.



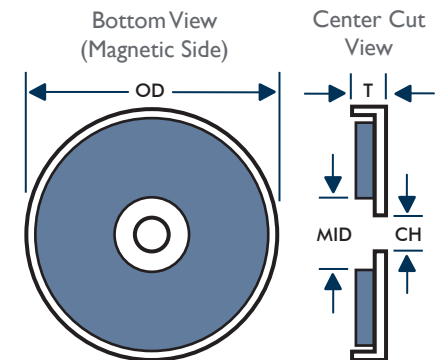
Add a hook to hang banners, hold large tarps, hang shop lights or post important signage from metal surfaces.



Round base magnets are strong enough to hold signage or towing lights to a vehicle.

Part No.	Pounds Pull	Dimensions in Inches				Magnet	Weight (lbs.)
		OD	T	CH	MID		
RB20	4	1.21	0.171	0.125	0.187	Rubber	0.03
RB20CCER	11	1.21	0.18	0.138	0.39	Ceramic	0.25
RB44	12	1.70	0.3	10-24TH	0.71	Ceramic	0.09
RB45	16	1.42	0.283	0.19	0.375	Ceramic	0.07
RB45N-NEO	48	1.42	0.265	0.19	-	Neodymium	0.08
RB50	35	2.04	0.29	0.20	0.866	Ceramic	0.14
RB50N-NEO	105	2.04	0.305	0.20	-	Neodymium	0.15
RB60	45	2.37	0.35	0.20	0.945	Ceramic	0.25
RB70	65	2.65	0.36	0.25	1.0	Ceramic	0.33
RB80PRC*	95	3.20	0.44	0.28	1.20	Ceramic	0.49
RB100	200	4.90	0.50	0.50	1.75	Ceramic	1.44

Key: OD = Overall Diameter, T = Thickness, CH = Center Hole Size, MID = Magnet's Inside Diameter
* = The gap between cup and magnet is filled. All dimensions approximate.



Rubber Covers for Round Base Pot Magnets

Protective rubber covers prevent scratching of painted or easily scratched surfaces. Great for attaching a sign to cars, trailers, equipment or appliances.

Part No.	Pounds Pull	Dimensions in Inches			Weight (lbs.)
		OD	T	CH	
RC-RB50	11*	2.04	0.025	0.197	0.003
RC-RB70	24*	2.64	0.025	0.278	0.005
RC-RB80	40*	3.125	0.025	0.375	0.125
RC-RB100	85*	4.85	0.025	0.390	0.185

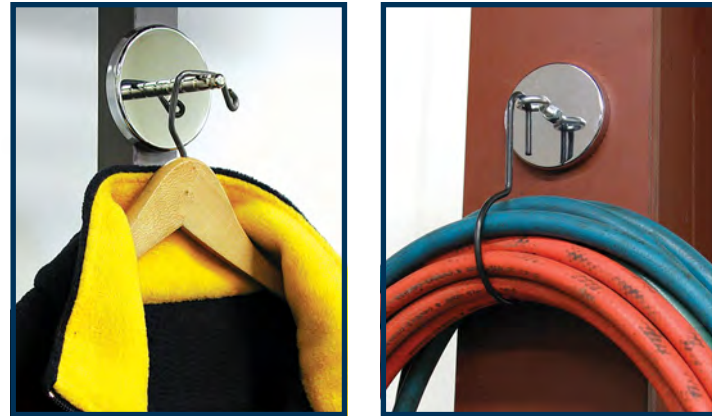
Key: * = Pounds pull of round base magnet with rubber cover.



Rubber cover applied to RB80PRC

Round Base Magnet Assemblies

Powerful pot magnet bases feature attachments for practical applications.



RB80POST is useful for hanging garments, while the RB80EB is handy for storing cords, lights or cables.

Choose from a wide variety of sizes, type of magnet, pounds pull and attachments.

Hang-It Magnet with Attached Eyebolt or Grooved Post

Hang coats, suits or signs. Powerful round base magnet includes attached eyebolt or grooved post. See choices in chart below.

Mount-It Magnet with Attached Screw and Nuts

Each has securely-mounted screw and three nuts. See choices below.

Clip-It Magnet with Attached Clip for Broom or Tool Handles

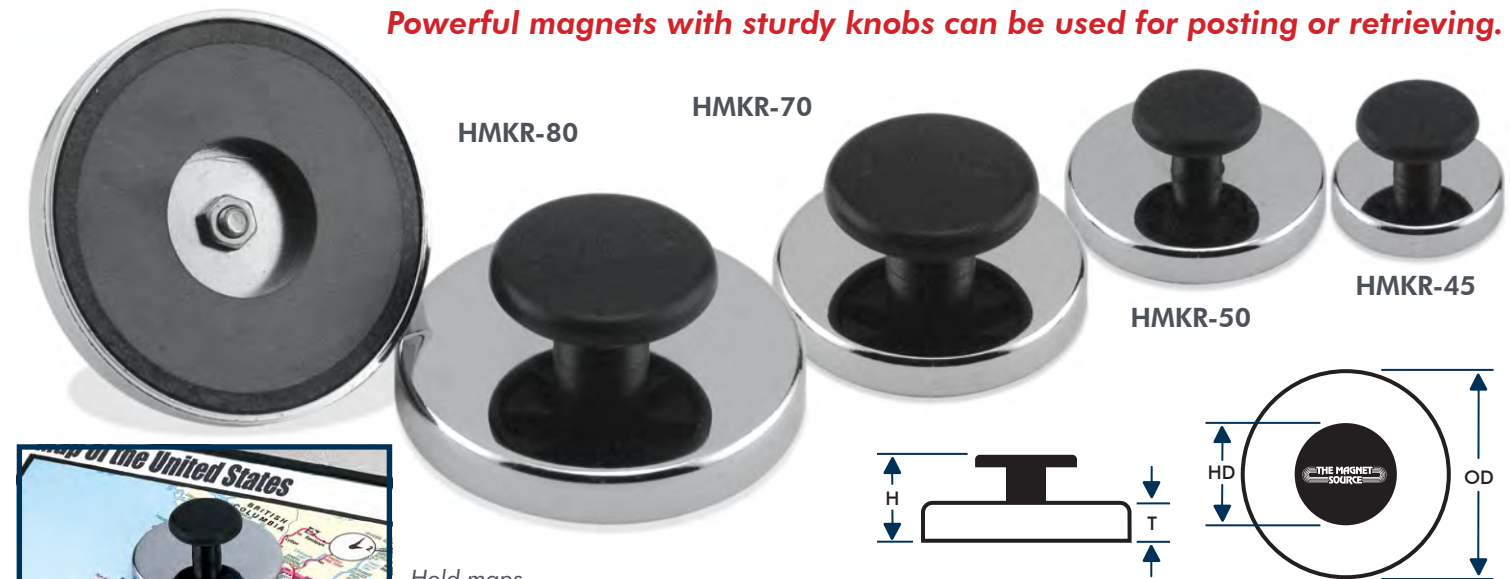
Each features mounted clip, three sizes. See choices below.

Part No.	Pounds Pull	Dimensions (in)		Attachment	Magnet	Weight (lbs.)
		OD	TD			
RB50EB*	35	2.04	2.10	Eyebolt	Ceramic	0.29
RB50EBNEO*	90	2.04	2.10	Eyebolt	Neodymium	0.18
RB80EB	95	3.20	2.125	Eyebolt	Ceramic	0.75
RB80POST	95	3.20	2.375	Post	Ceramic	0.58
RB100EB*	200	4.90	4.13	Eyebolt	Ceramic	
RB100POST	200	4.90	2.65	Post	Ceramic	1.16
RB50B3N	35	2.04	1.225	Bolt/Nuts	Ceramic	0.24
RB50B3N-NEO*	90	2.04	1.225	Bolt/Nuts	Neodymium	0.17
RB70B3N*	65	2.65	1.275	Bolt/Nuts	Ceramic	0.42
RB50BVCC	35	2.04	2.20	Black Clip	Ceramic	0.19
RB50BNCC	35	2.04	2.285	Black Clip	Ceramic	0.18
RB50NPC	35	2.04	2.21	Plated Clip	Ceramic	0.18

Key: * = Not shown. OD = Overall Diameter, TD = Total Depth. All dimensions approximate.

Base Magnets with Knobs

Powerful magnets with sturdy knobs can be used for posting or retrieving.



Hold maps and blueprints in place.

Round Base Magnets with Knobs

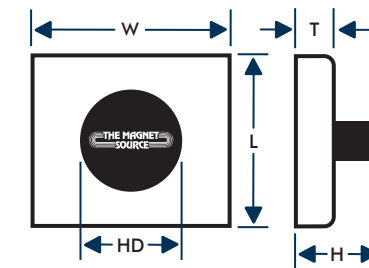
Hold blueprints, calendars, visual aides, work plans and more with these convenient, heavy duty magnetic bases. Ideal for warehouse, workroom and office use. Each magnet features durable nickel plating and easy-grip knob for positioning.

Part No.	Pounds Pull	Dimensions in Inches				Weight (lbs.)
		OD	HD	T	H	
HMKR-45*	16	1.425	1.0	0.283	0.945	0.10
HMKR-50*	25	2.035	1.0	0.315	0.975	0.181
HMKR-70*	65	2.63	1.75	0.374	1.325	0.388
HMKR-80**	95	3.20	1.75	0.425	1.41	0.619

Key: * = Available with non-scratch liner, call us for details (pounds pull strength will be reduced with liner). OD = Overall Diameter HD = Handle Diameter, T = Thickness, H = Height including knob. ** = The gap between cup and magnet is filled. All dimensions approximate.

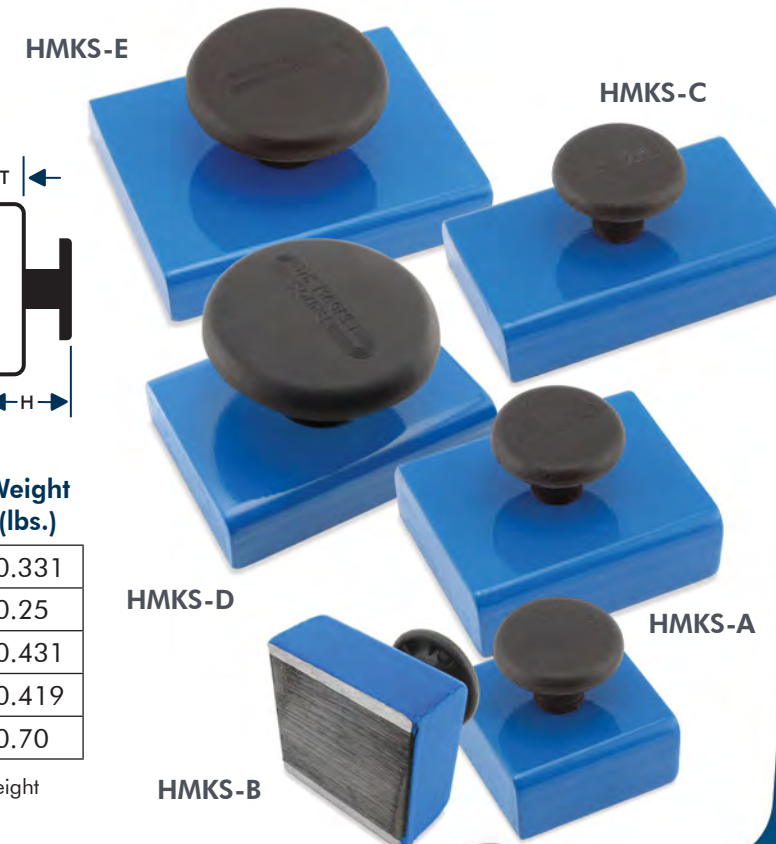
Rectangular Base Magnets with Knobs

Painted with bright blue enamel, these heavy duty base magnets feature durable steel construction. Sturdy easy-grip knobs allow easy repositioning, or use as a retrieving magnet to pick up small tools and scattered nuts and bolts.



Part No.	Pounds Pull	Dimensions in Inches					Weight (lbs.)
		W	L	HD	T	H	
HMKS-A	20	2.375	1.375	1.0	0.565	1.31	0.331
HMKS-B	15	1.38	1.40	1.0	0.65	1.39	0.25
HMKS-C	38	2.0	1.625	1.0	0.65	1.39	0.431
HMKS-D	40	2.375	1.635	1.0	0.56	1.31	0.419
HMKS-E	45	3.0	2.375	1.475	0.585	1.50	0.70

Key: W = Width, L = Length, HD = Handle Diameter, T = Thickness, H = Height including knob. All dimensions approximate.



Magnetic Hooks

Powerful hooks can be used to hang wiring, cables, lights, speakers and more.



Ceramic Magnetic Hooks

(Above) These powerful magnetic assemblies with attached hooks can lift from 9 to 55 lbs. in a vertical test. Each features a powerful ceramic magnet. Use these hooks to hang lights, tools, keys or signs from ferrous metal doors, shelves, tool boxes and filing cabinets.

Part No.	Pounds Pull	Dia. in Inches	Magnet	Color
MHHH9	9	1.0	Ceramic	White
MHHH14	14	1.25	Ceramic	White
MHHH20*	20	2.0	Ceramic	Plated
MHHH26*	26	1.875	Ceramic	White
MHHH55*	55	2.75	Ceramic	White
MHHH65*	35	2.63	Ceramic	Plated

Key: * = Protective non-scratch liner included.



Neodymium Magnetic Hooks

(Left) Each features a neodymium magnet, the most powerful magnetic material in the world. These hooks can lift from 18 to 61 lbs. in a vertical test. Use them to hang cables and spotlights, or a lunch bag inside of a locker, or even cooking utensils next to a grill or stove.

Part No.	Pounds Pull	Dia. in Inches	Magnet	Color
MHHH18*	18	0.875	Neodymium	White
MHHH61*	61	1.25	Neodymium	White
NA012500N	40	1.41	Neodymium	Plated

Key: * = Protective non-scratch liner included.



Hang tools, lights, wiring and cables. Great for organizing work areas in shop, office and home.

Specialty Magnetic Hooks

Versatile hooks and assemblies are useful for a variety of applications.



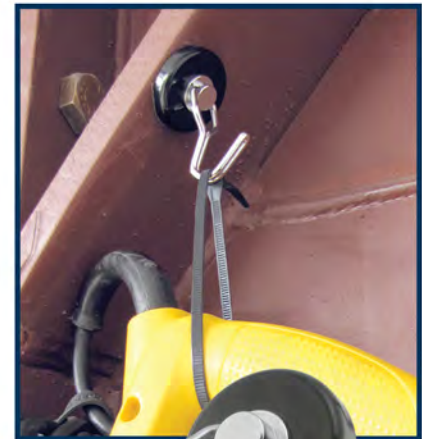
Reversible Magnetic Hook

Numerous shop, industrial and consumer uses. Use to hang lights, wiring, tools and banners from any ferrous metal surface. Loosen the bolt and flip the hook for versatility in hanging directions. **MHHH25HOOK**



Magnetic Carabiner Hook

Super strong neodymium magnet assembly with easy-clip carabiner hook has 45 lbs. pull. Use to hang a tool belt or other heavy items to metal walls, beams and cabinets. 1.125" dia. **07587B**



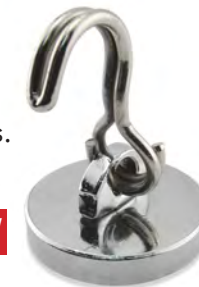
Super Magnet Assembly with Ring

A strong neodymium magnet makes this device perfect for holding signs or aisle/lane chains. Includes non-scratch protector on magnetic side. 1.125" dia., 35 lbs. pull. **NA011200N**



Swing Magnetic Hook

(Right) Swings 180 degrees. Neodymium magnet. **MHHH07589BX**



Rotating Magnetic Hook

Swivels 360 degrees and swings 180 degrees. Heavy duty construction ideal for holding and storing cables, tools and wires in the warehouse. Neodymium magnet. **MHHH07580BX**

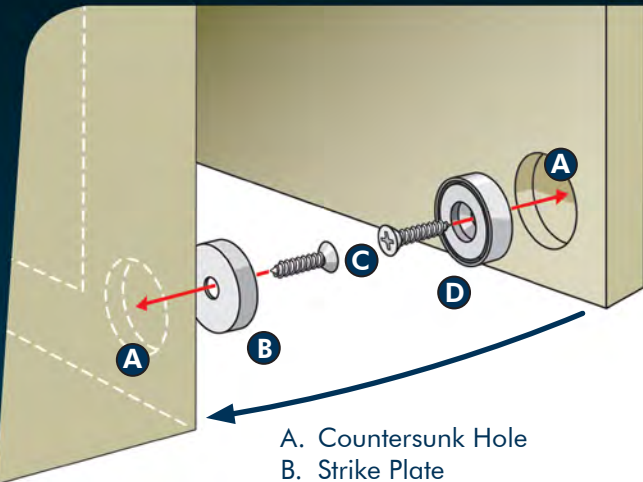
Part No.	Pounds Pull	Dia. in Inches (base)	Attachment	Magnet	Color
MHHH25HOOK	25	2.25	Reversible Hook	Ceramic	Blue
MHHH07580BX*	65	1.47	Rotating, Swivel Hook	Neodymium	Black
07587B	45	1.125	Carabiner Hook	Neodymium	Plated
NA011200N	35	1.125	Key Ring	Neodymium	Plated
MHHH07589BX	40	1.125	Swing Hook	Neodymium	Plated
MHHWP14**	14	1.25	Knob	Ceramic	White

Key: * = Protective non-scratch liner included. ** = Attached knob instead of a hook. All dimensions approximate.

Super powerful and compact!

These powerful magnetic assemblies are designed to be used as door latches for cabinets, chests, displays and more. Simply attach the magnet in a steel cup to one surface and the strike plate to the other to make a secure closure. Counterbore a hole in the wood for flush mounting. Available in 5 sizes with magnetic pull strengths ranging from 2 to 30 pounds. Mounting screws also available.

Purchase as individual pieces or complete kits. Kits include Steel Cup, Strike Plate, Neodymium Magnet Disc, Noise Buffer Pad and Screws.



- A. Countersunk Hole
- B. Strike Plate
- C. Screws
- D. Magnet in Steel Cup

2 Lbs. Pull

	Dimensions in Inches		Part No.
	Outer Dia.	Thickness	
Steel Cup (press fit)	0.38	0.25	ZZRB11CUPZ
Strike Plate	0.375	0.094	ZZFWNM38Z
Neo Magnet Disc	0.25	0.08	ND002507N
Screw: #4 Phillips (1)		0.50	ZZFWS4X.5
Kit of above items plus noise buffer pad			NMLKIT1

6 Lbs. Pull

	Dimensions in Inches		Part No.
	Outer Dia.	Thickness	
Steel Cup	0.50	0.25	ZZRB12CUPZ
Strike Plate	0.50	0.094	ZZFWNM50Z
Neo Magnet Disc	0.36	0.075	ND003602N
Screws: #4 Phillips (2)		0.50	ZZFWS4X.5
Kit of above items plus noise buffer pad			NMLKIT2

16 Lbs. Pull

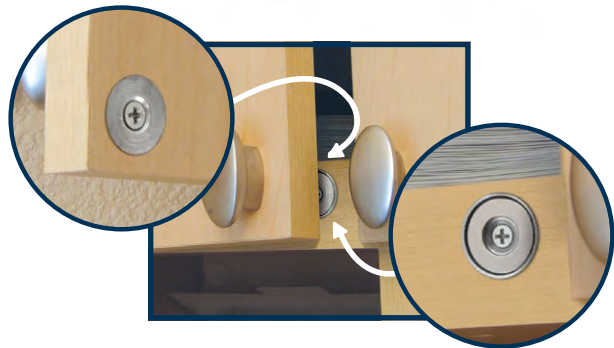
	Dimensions in Inches		Part No.
	Outer Dia.	Thickness	
Steel Cup	0.625	0.25	ZZRB13CUPZ
Strike Plate	0.625	0.094	ZZFWNM625Z
Neo Magnet Disc	0.49	0.105	ND004903N
Screws: #4 Phillips (2)		0.50	ZZFWS4X.5
Kit of above items plus noise buffer pad			NMLKIT3

23 Lbs. Pull

	Outer Dia.	Inner Dia.	Thickness	Part No.
	Steel Cup	0.875	-	
Strike Plate	0.875	-	0.156	ZZFWNM875Z
Neo Magnet Ring	0.74	0.375	0.105	NR007403N
Screws: #8 Phillips (2)		-	0.75	ZZFWS8X.75
Kit of above items plus noise buffer pad				NMLKIT4

30 Lbs. Pull

	Outer Dia.	Inner Dia.	Thickness	Part No.
	Steel Cup	1.13	-	
Strike Plate	1.13	-	0.15	ZZFWNM113Z
Neo Magnet Ring	1.0	0.50	0.11	NR010007N
Screws: #8 Phillips (2)		-	0.75	ZZFWS8X.75
Kit of above items plus noise buffer pad				NMLKIT5

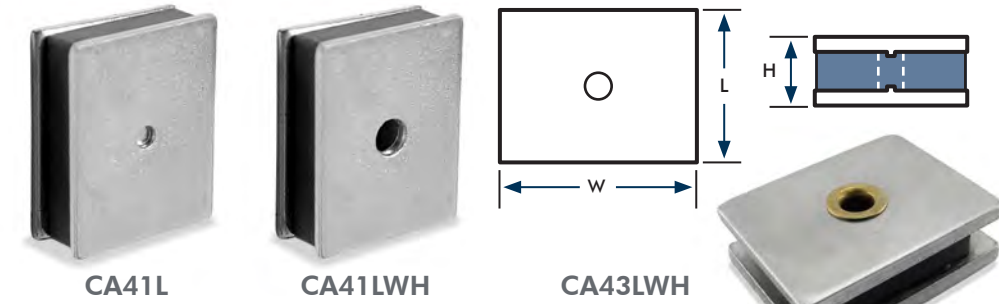


These neodymium magnetic latches make powerful closures for cabinets.

Can be used for holding fixtures, cabinet door latches, sign building applications and more.

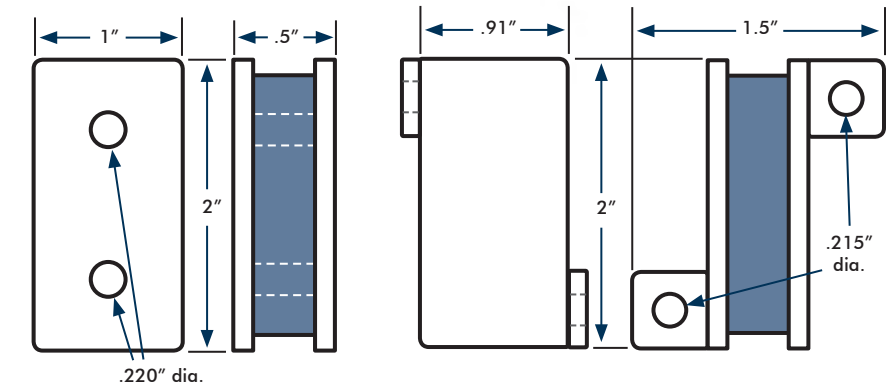
Latch Magnet Sandwich Assemblies

A strong ceramic magnet is "sandwiched" between two zinc-plated steel pole pieces to form a powerful latch magnet assembly. Assembly held together magnetically, and all four small sides have magnetism.

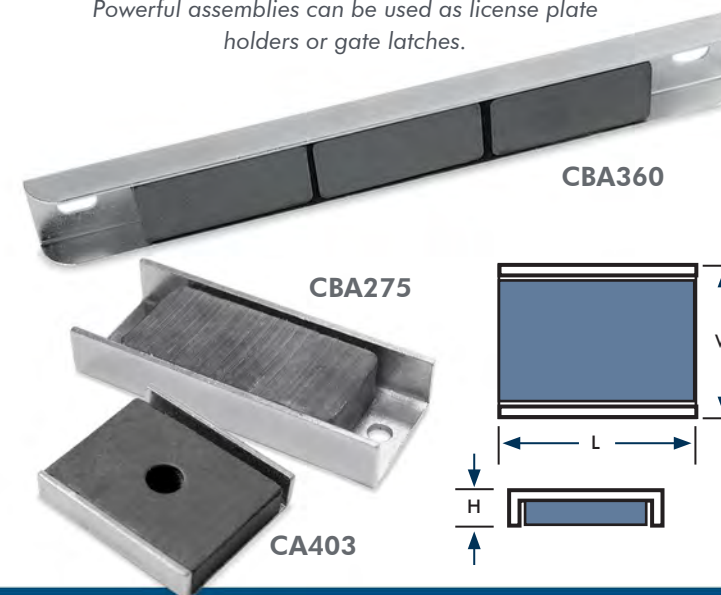


Latch Magnet Channel Assemblies

(Right) A strong ceramic magnet is positioned between two zinc-plated metal pieces, providing much more strength than the magnet by itself. Useful as a powerful door latch. Also hold name plates, fixtures, signs and display pieces. (Below) Magnet is fixed into a zinc-plated steel channel with holding power on one large surface. Includes center or outside holes for mounting. Large assembly (CBA360) makes an excellent tool or sign holder, and can be used as a license plate holder for test drives. The rubber magnet assembly (RA403) is impact and vibration resistant.



Powerful assemblies can be used as license plate holders or gate latches.

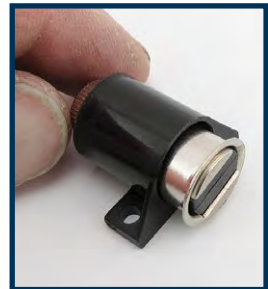


Part No.	Pounds Pull	Dimensions in Inches			
		L	W	H	Channel Hole
CA403	7	1.0	0.875	0.25	0.125 dia.
CA41L	12	1.0	0.8125	0.3125	**
CA41LWH	12	1.0	0.8125	0.3125	0.187 dia
CA42LW2H	22	1.0	2.0	0.50	0.22 dia.
CA43LWH	15	1.0	1.25	0.40	0.14 dia.
CBA275	25	2.7	1.08	0.50	0.186 dia. (2)
CBA360	25	8.0	1.063	0.50	0.28 x 0.428 (2)
LM40P	40	2.0	0.91	1.50	0.215 dia.
RA403 Rubber Magnet	5	1.0	0.875	0.25	0.1875 dia.*

Key: L = Length, W = Width, H = Height, * = Magnet in the channel has 0.195" dia. hole, ** = pole pieces each have 0.095" dia. dimple. All dimensions approximate.

Adjustable Latch Magnets & Rectangular Bases

Practical and powerful, each with a strong ceramic magnet.



Adjust with fingers.



Adjust with screwdriver.



NEW

Adjustable Latch Magnets

Powerful latch magnets are ideal for cabinets and other enclosures. The distance between the magnet and strike plate can be adjusted up to .25" with fingers or screwdriver. Mounting screws included.

Part No.	Pounds Pull	Dimensions in Inches		
		W	H	Depth
CL01BR	7	1.65	1.60	0.60
CL01WH	7	1.65	1.60	0.60
CL02WH	4	1.05	1.10	0.65
CL02BK	4	1.05	1.10	0.65

Key: W = Width, H = Height. All dimensions approximate.

Add secure closures to cabinet doors.



Plated Rectangular Base Magnets

Because of their low cost, high holding power and compact design, these magnetic channel bases are very versatile. Use to post signs on warehouse shelves or vehicles that are not in use.

Use for posting signs on metal shelves and equipment.



Part No.	Pounds Pull	Dimensions in Inches		
		L	W	H
CA293	22	3	0.875	0.25
CA293WN*	22	3	0.905	0.75
CA293WA**	22	3	0.905	0.25

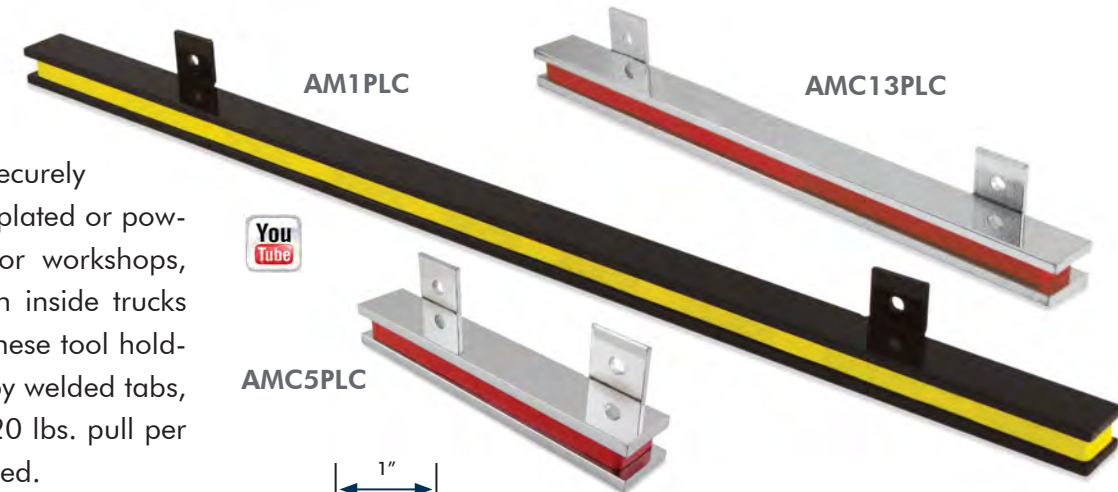
Key: L = Length, W = Width, H = Height, * = Has 3/8 - 24 threaded nut. ** = Has adhesive backing with liner. All dimensions approximate.

Magnetic Tool Holders

Super-strong magnetic tool holders feature pull strength of up to 30 lbs. per inch!

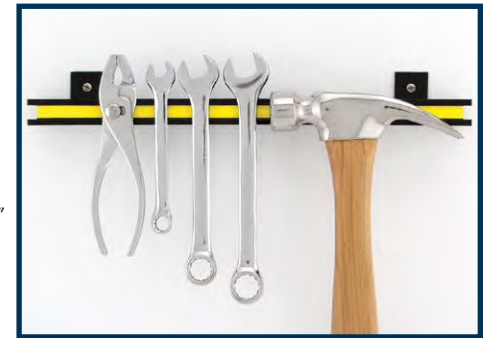
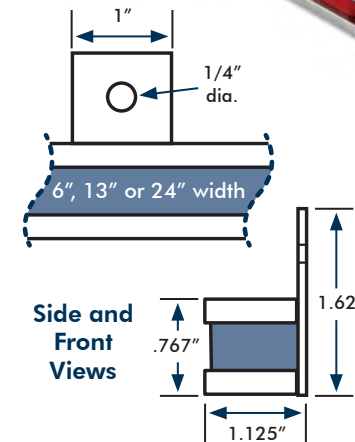
Magnetic Tool Holders

Heavy duty, permanent magnet assemblies hold large or small tools and metal parts securely in place. Available in nickel-plated or powder coated black. Perfect for workshops, garages, factories, and even inside trucks and vans. When mounted, these tool holders are held firmly in place by welded tabs, with 1/4" holes for screws. 20 lbs. pull per inch. Mounting screws included.



Part No.	Dimensions in Inches		Color
	W	HD	
AM1PLC	24	16	Black/Yellow
AM2PLC	13	10	Black/Yellow
AMC13PLC	13	10	Nickel/Red
AMC24PLC	24	16	Nickel/Red
AM5PLC	6	4	Black/Yellow
AMC5PLC	6	4	Nickel/Red

Key: W = Width, HD = Hole distance, center to center. All dimensions approximate.



Mount to a toolbox magnetically.

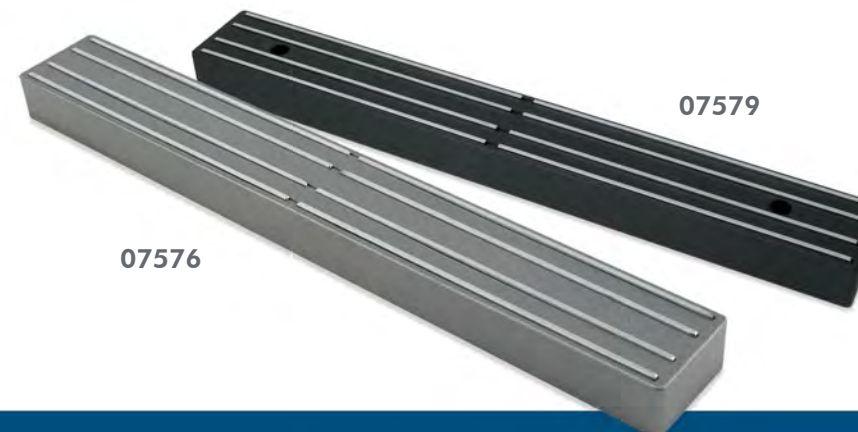


Mount to a workbench with screws.

Magnetic Knife and Tool Holders

Magnetic or Screw Mount

Powerful magnetic bars in attractive gray or black organize utensils and tools in the kitchen, shop or home office. Two mounting styles to choose from. Magnetic mount features magnets on front and back so bar attracts to metal surface for mounting. Screw mount features one-sided magnetism with mounting screws included. 30 lbs. pull per inch. 12" W x 1.5" H x 1" D.

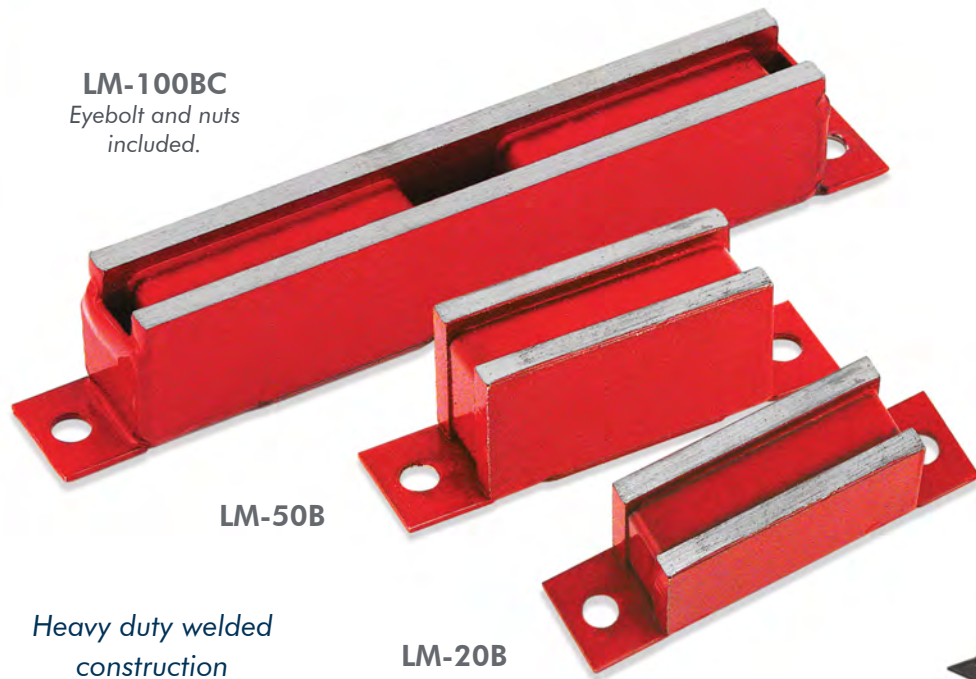


Part No.	Color	Mounting
07576	Gray	Magnetic
07577	Black	Magnetic
07578	Gray	Screws
07579	Black	Screws

Super Latch Magnets

Each will lift, suspend, hold and retrieve metal objects up to 100 times its own weight!

Use super latch magnets as door stops, small tool holders and powerful magnetic clamps. Attach to a dowel or board to make a small, hand-held magnetic tool for picking up nails, screws, washers, nuts and more. Each magnet features heavy duty, welded construction and is painted red (AM3/RM100C is painted black).



LM-100BC
Eyebolt and nuts included.

LM-50B

LM-20B

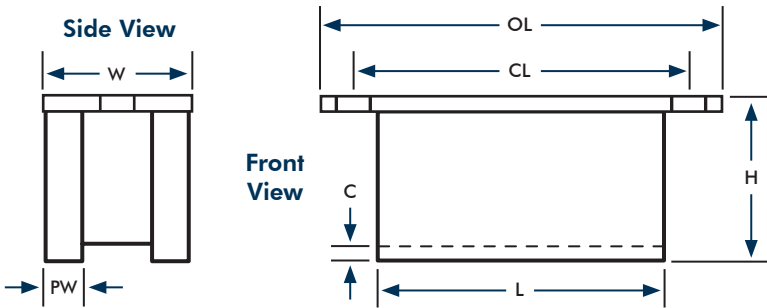
Heavy duty welded construction



Attach to wooden or metal gate for a secure closure. Mount magnet to step ladder or wall to conveniently hold hand tools. Use to position trouble light, door sign, or as a door stop.



AM3/RM100C
Eyebolt and nuts included.



Part No.	Pounds Pull	Dimensions in Inches								Weight (lbs.)
		L	W	H	PW	C	CL	OL	Hole Dia.	
LM-100BC	100	5	0.75	1.062	0.187	0.125	5.5	6	0.25	0.82
LM-50B	50	2	0.75	1.062	0.187	0.125	2.5	3	0.25	0.34
LM-20B	20	2	0.75	0.562	0.187	0.125	2.5	3	0.25	0.18
AM3/RM100C*	100	5	0.75	1.062	0.187	0.125	5.5	6	0.25	0.82

Key: L = Length, W = Width, H = Height, PW = Pole Width, C = Clearance of magnet, CL = From hole center to hole center, OL = Overall Length, * = Painted black. All dimensions approximate.

Latch & Retrieving Magnets

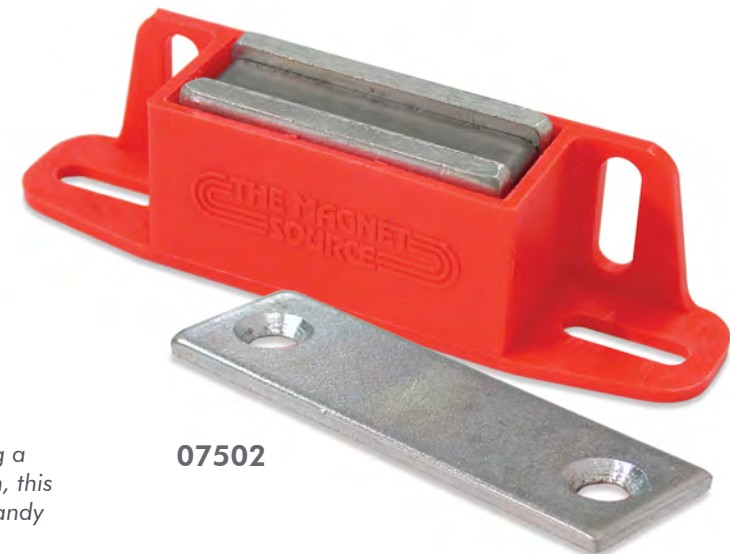
Powerful magnetic assemblies are enclosed in durable plastic housing.

Universal Latch Magnet

Powerful latch magnet set in durable red plastic casing with four elongated holes allows multi-directional and adjustable mounting. This heavy duty door or gate closure latch comes with 1/8" thick steel strike plate with countersunk holes to accommodate flat head screws.



In addition to being a powerful door latch, this magnet makes a handy gate closure.



07502

Part No.	Pounds Pull	Dimensions in Inches		
		L	W	H
07502	50	4.25	1	1.125
07503	100	2.0	2	1.0
07504	40	2.0	2	0.75

Key: L = Length, W = Width, H = Height. All dimensions approximate.



Attach a rope or chain to retrieve metal boxes, chains or tools.

Heavy Duty Retrieving Magnets

Add the enclosed eyebolt on the top or side of the magnet and use to hold, lift and hang objects. Hundreds of uses are possible! Each includes Magnetic Shields™ to block magnetic strength when not in use, allowing easy storage in metal toolboxes or with metal tools.



07503

07504

07503 and 07504 include Magnetic Shields™ to block magnetic strength when not in use.

Heavy Duty Holding & Retrieving Magnets

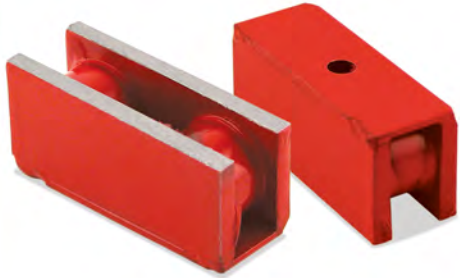
These magnets offer hundreds of commercial and industrial uses.

Standard Holding and Retrieving Magnet 370-3BULK

Screw or bolt to most surfaces. Use to collect scattered screws and nuts. Add an eyebolt and hold spray nozzles, hoses, temporary wiring and more.

Heavy Duty Holding and Retrieving Magnets (Below)

These models lift up to 225 lbs. Attach a rope or chain to the eyebolt and go fishing for metal objects in tanks, vats, waterways or hard-to-reach places. Move parts in and out of degreasing tanks. All are painted red. Sturdy welded construction, eyebolt and nuts included.



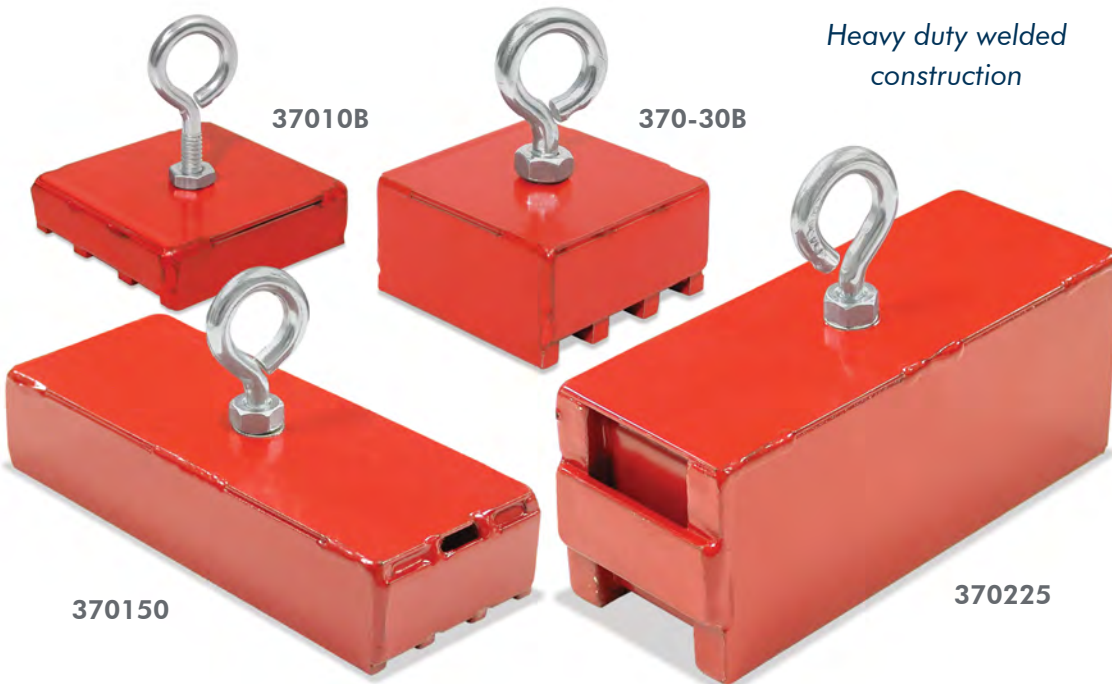
370-3BULK



Keep metal items within reach.



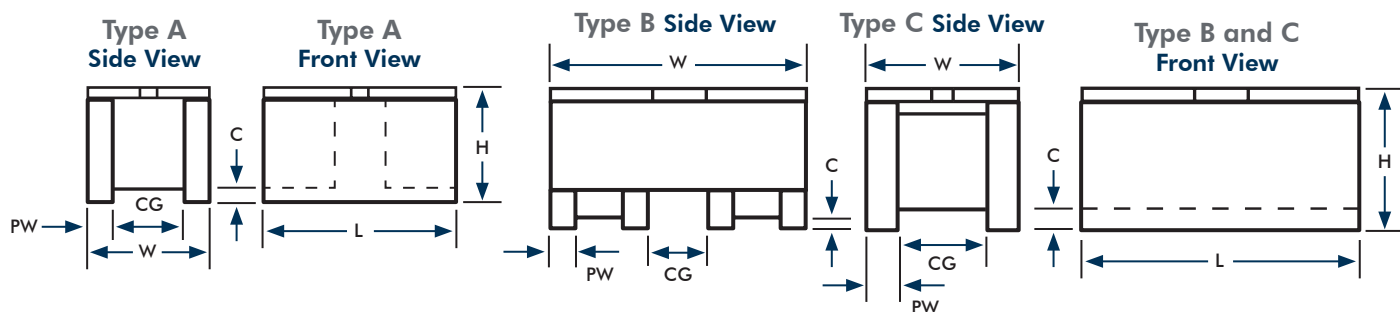
Retrieve heavy objects.



Heavy duty welded construction

Part No.	Type	Pounds Pull	Dimensions in Inches							Weight (lbs.)
			L	W	H	PW	C	CG	Hole Dia.	
37010B	B	40	2.0	2.0	0.562	0.187	0.125	0.437	0.25	0.83
370150	B	150	5.0	2.0	1.062	0.187	0.125	0.437	1/4-20TH	1.75
370225	C	225	5.0	2.0	2.0	0.375	0.187	1.187	1/4-20TH	4.5
370-3BULK	A	18	1.75	0.625	0.812	0.125	0.125	0.375	0.187	0.12
370-30B	B	100	2.0	2.0	1.062	0.187	0.125	0.437	0.25	0.83

Key: L = Length, W = Width, H = Height, PW = Pole Width, C = Clearance of magnet, CG = Center Gap, TH = Tapped Hole. All dimensions approximate.



Powerful Handle Magnets

Safely lift metal objects in factories, workshops and warehouses.

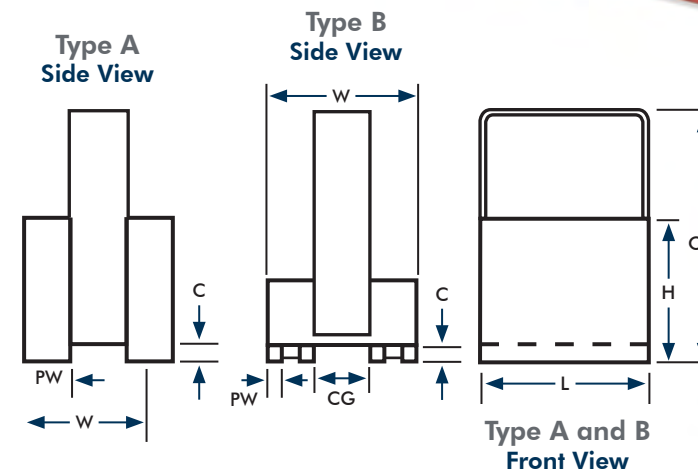
These super powerful magnets can be used to lift heavy metal shelving, beams and doors. Also clean up scattered ferrous metal screws, nuts and bolts. Steel handle magnets feature heavy duty welded construction and are painted red. Part No. 07501 has ergonomic handle and plastic body.



Move large, heavy metal objects from storage bins, or remove nails, screws and other iron objects from degreasing and paint tanks.



Heavy duty welded construction



07501 Includes two Magnetic Shields™ to block magnetic strength when not in use.

Part No.	Type	Pounds Pull	Dimensions in Inches							Weight (lbs.)
			L	W	H	PW	C	OH	CG	
07212	A	25	1.062	0.75	1	0.187	0.125	2.375	0.395	0.25
07213	A	50	2.0	0.75	1	0.187	0.125	2.0	0.395	0.42
07501	A	100	4.5	1.0	1	0.187	0.125	3.375	0.395	0.84
HM100	A	100	4.0	0.75	1	0.187	0.125	2.375	0.395	0.75
HM-150	B	150	5.0	2.0	1	0.187	0.125	5.0	0.437	2.26
HM-225	A	225	5.25	2.0	2	0.375	0.25	5.0	1.187	5.04

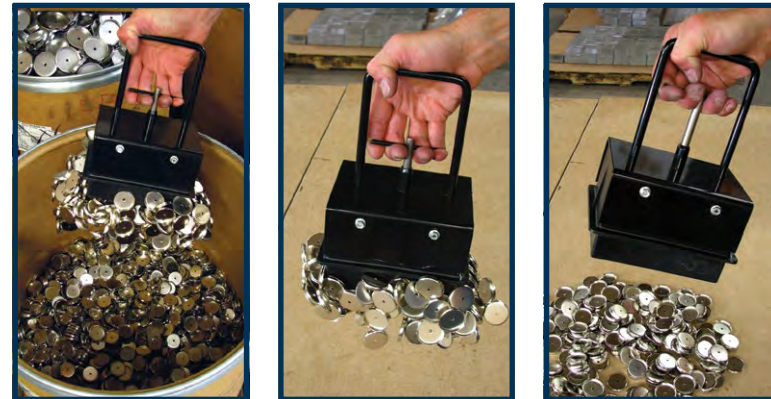
Key: L = Length, W = Width, H = Height, PW = Pole Width, C = Clearance of magnet, OH = Overall Height, CG = Center Gap. All dimensions approximate.

Material Transfer Magnets

Safely lift, transfer and easily release loose bulk metal objects in factories and warehouses.

Heavy Duty Bulk Parts Lifters

Each attracts ferrous metal parts, then a fingertip pull on the easy release bar drops the entire load in its desired location. Easily transfer bulk metal pieces including nails, screws, nuts, washers, eyebolts or other ferrous metal items.



Pick Up Transfer Release

Models ML72 and ML74 are available with standard or long handle and nylon base. Models ML76 and ML78 are stainless steel with regular handle only. Replacement parts are available - contact us for details.

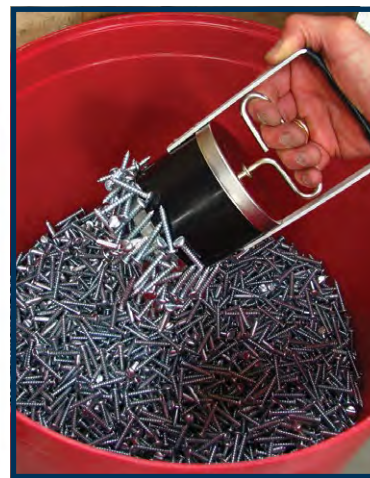


Part No.	Pounds Pull	Dimensions in Inches			Weight (lbs.)
		L	W	H*	
07540	1	3.5 Dia.		6.75	1.2
ML72C	4-5	4.375	3.125	9.25	4.5
ML72-30C	4-5	4.375	3.125	32.25	8.0
ML74C	8-9	6.25	4.75	9.25	8.0
ML74-30C	8-9	6.25	4.75	32.25	12.0
ML76C	10	8.50	4.75	9.75	11.0
ML78C	13	11.25	4.75	9.75	15.0

Key: L = Length, W = Width, H = Height, * = Height includes handle. All dimensions approximate.

Light Duty Magnetic Bulk Parts Lifter

A low-cost time saver! Transfer and pick up nails, screws, nuts or any small metal objects, then pull the handle to release the objects in the desired location. Smooth, uninterrupted sides allow for fast burrowing. Prevents injuries from sharp metal objects. Its heavy duty canister is lightweight and features an easy-to-grip handle.



Easily pick up and release nails, nuts, screws and more!



www.youtube.com/MasterMagnetics

Magnetic Retrieving Batons

Useful in clearing ferrous metal pieces and debris from degreasing tanks and around drill tables and saws



RHS01 Standard Baton

RHS02 Baton with Grip and Hang Hook

Magnetic retrieving batons work with dry or wet containers.

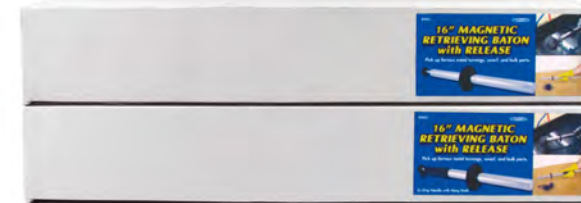
NEW

RHS03 Extra Long Baton with Grip and Hang Hook

Extra long baton reaches to the hard-to-get-to locations!



www.youtube.com/MasterMagnetics



Simple to use:

Collect debris, then move separator to dumping area or trash container.



Pull handle to release collected debris. Release guard shields hand from sharp pieces.

Magnetic Retrieving Batons are innovative and powerful tools to remove ferrous metal materials in wet or dry environments!

- Ideal for removing hardware from storage bins
- Clean water or degreasing tanks of metal shavings
- Unique shape allows for easy pick up from walls and corners
- Rare earth magnets maximize holding power!

The non-corrosive, stainless steel housing baton comes in three models with the standard RHS01, or the RHS02 model with its easy-grip handle and hang hook, or the extra long baton for hard-to-reach locations. Use of safety goggles and gloves is recommended.

Part No.	Dimensions in Inches		Weight (lbs.)
	Length	Diameter	
RHS01	16	1.0	1.1
RHS02	16	1.0	1.2
RHS03	39	0.5	0.95

All dimensions approximate.

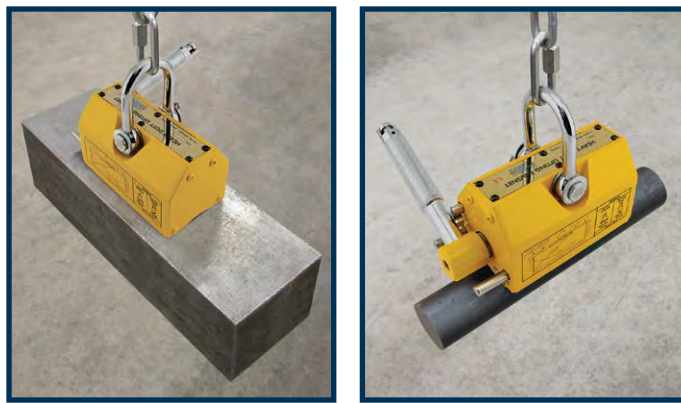
Material Handling Magnets

Heavy Duty Lifting Magnets

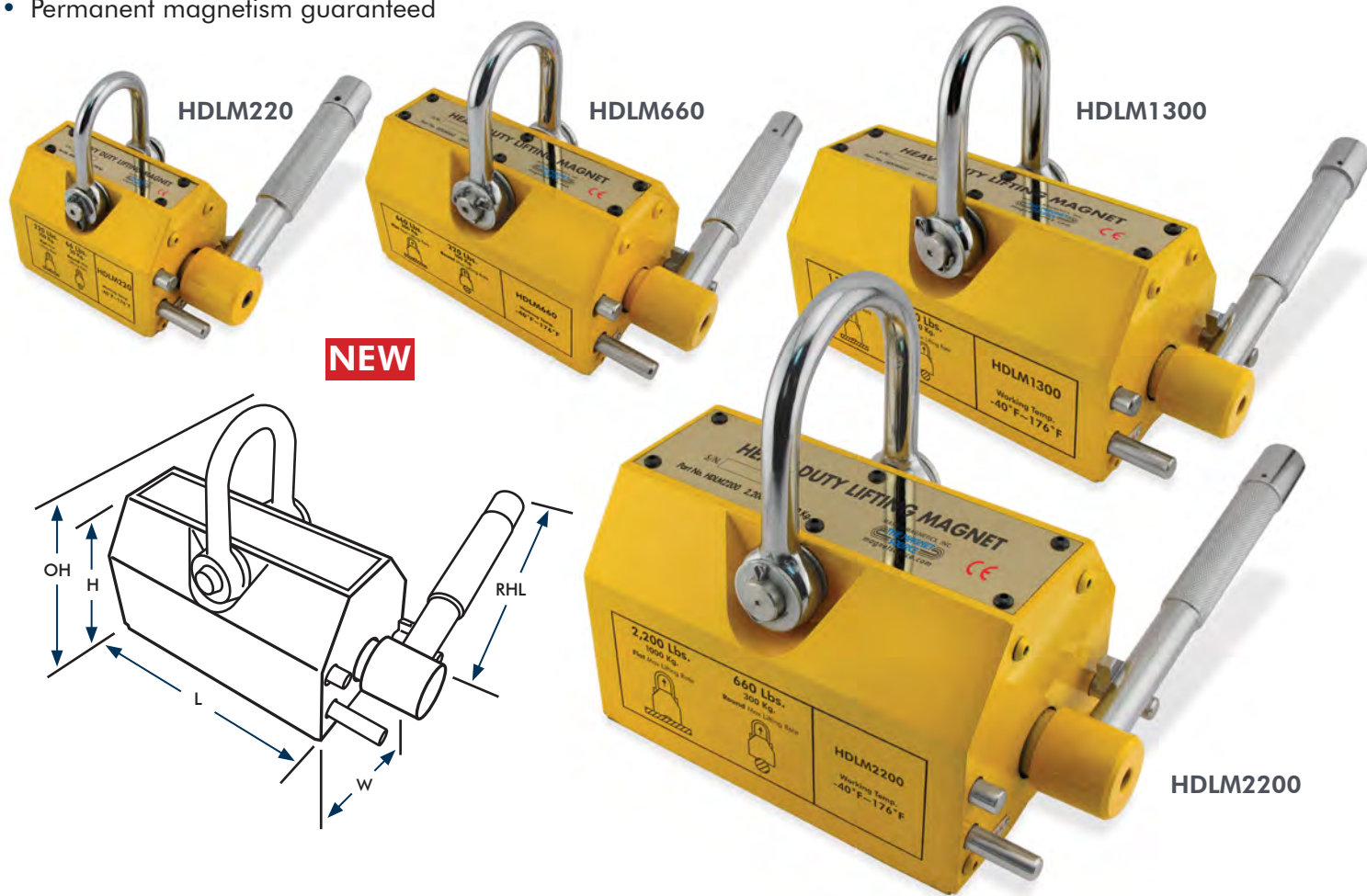
Built with neodymium magnets - the strongest magnetic material in the world!

Ideal for handling steel plate, forgings, die castings and similar items in machine shops, warehouses and industrial processing plants.

- Lifts flat or round ferrous metal items
- ON/OFF locking release handle
- Eliminates the need for slings or clamping devices
- No electricity required for operation of magnet
- Permanent magnetism guaranteed



Lift flat or round heavy ferrous metal pieces.



Part No.	Flat Max Lift Rate**		Round Lift Rate**		Dimensions in Inches					Weight (lbs.)
	(lbs.)	(kg.)	(lbs.)	(kg.)	L*	W*	H*	OH	RHL	
HDLM220	220	100	66	30	3.625	2.50	2.75	4.50	5.625	6.40
HDLM660	660	300	220	100	6.50	3.50	3.75	6.50	6.875	21.15
HDLM1300	1,320	600	440	200	9.25	4.625	4.75	8.75	8.625	49.65
HDLM2200	2,200	1,000	660	300	10.375	6.625	6.625	11.50	11.125	115.75

Key: L = Length, W = Width, H = Height, OH = Overall Height, RHL = Release Handle Length. * = Dimensions for magnet base only. All dimensions approximate. ** = Lifting strength varies depending on thickness and composition of ferrous metal object being lifted. For safety, the actual breakaway force is 3.5 times greater than the maximum lift ratings. Other sizes available by special order, contact us for details.

Material Handling Magnets

Magnetic Blocks

Multiple-pole magnetic blocks have mounting holes for attaching to surfaces for work holding. May also be drilled and tapped for fastening to spotlights, shop work lights, spray nozzles, etc. Heat tolerant to 180° F. Model B450 is available with or without a cam release and eyebolt (available on B450 only). Must be specified.



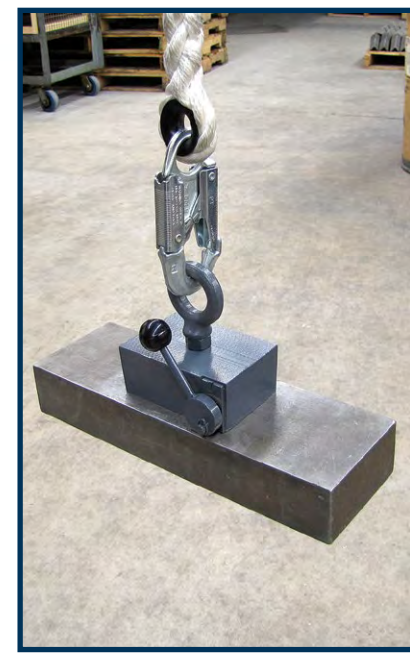
B125



B450W/CAMC

Part No.	Pounds Pull	Dimensions in Inches			
		L	W	H	D
B75	75	2.437	1.312	1.17	2.0
B125	125	3.375	1.5	1.25	2.875
B175	175	3.562	2.062	1.312	3.0
B450	450	4.25	2.875	1.75	*
B450W/CAMC	450	4.25	2.875	1.75	*

Key: L = Length, W = Width, H = Height, D = Distance between mounting holes. * = Holes may be drilled 5/8" deep on back face. All dimensions approximate.



B450W/CAMC lifts flat, ferrous metal items up to 450 lbs.

Not recommended for lifting sheet metal.



M1000

M1037

Industrial Strength Magnetic Lifts

For thick, non-flexing steel items.

Eliminates the need for slings, clamping devices or chains. Ideal for handling solid ferrous metal blocks, steel plates, forgings and die castings in machine shops and warehouses. The PLM series features non-marring roller cam release mechanism, and requires less torque to release parts. No electricity required.



PLM1382

PLM1383

Part No.	Pounds Pull	Dimensions in Inches*			Weight (lbs.)
		L	W	H	
M1000	1,000	12.750	5.125	3.625	33
M1037	1,500	13.625	6.312	5.5	26
PLM1382	400	9.875	3.5	3.1875	12
PLM1383	1,000	12.625	5.0	3.1875	28
PLM1384	1,500	14.4375	7.0	3.1875	42

Key: L = Length including roller mechanism when engaged, W = Width, H = Height. * = Dimensions for magnet base only. All dimensions approximate.

Gripper, Squaring & Welding Magnets

Welding Magnets / Work-Holding Assemblies

Powerful magnets simplify and assist with various welding applications.



Magnetic Grippers

These allow a firm grip on steel sheets and plates. Primarily designed for sliding and pulling. A forward push of the handle releases the material. Each has stainless steel, welded construction and is heat tolerant to 180° F.*

Part No.	Pounds Pull	Dimensions in Inches			Weight (lbs.)
		L	W	H	
BC100C*	100	5.0	3.5	1.438	2.9
M479C	600	6.125	5.25	1.25	9.9
M480C	400	5.125	4.5	1.25	6.6
M688C	280	5.125	3.0	1.25	5.2

Key: L = Length, W = Width, H = Height. *Each has a heat tolerance of 180° F except BC100, which is not recommended for heat applications. All dimensions approximate.



Magnetic Welding Angles

Hold thick or thin gauge steel securely in place for optimum welding. Powerful magnets are mounted in stainless steel housing with an adjustable or fixed 90° angle.

Part No.	Dimensions in Inches			Weight (lbs.)
	L	W	H	
WMS1306	6.375	1.75	6.625	5.25
WMAD1307	7.25	1.75	7.25	5.5

Key: L = Length, W = Width, H = Height. All dimensions approximate.



Magnetic Squaring Arm

Hold a true cutting edge when shearing or cutting steel. Reposition with a couple turns of the built-in release knob. Once attached to a flat metal surface, the device is held firmly in place. Up to 480 lbs. of holding force.

Part No.	Dimensions in Inches			Weight (lbs.)
	L	W	H	
MSA12	12	2.125	1.0625	5.05

Key: L = Length, W = Width, H = Height. All dimensions approximate.

Welding Angle Magnets

Each of these attracts to any ferrous metal object and leaves hands free to safely work on the project. Ideal for fast setup and accurate holding for all welding jobs. Two models cover most common welding angles. Though not recommended for lifting applications, each model has a pull rating of 50 lbs.

Part No.	Pounds Pull*	Dimensions in Inches			Weight (lbs.)
		L	W	H	
WMH50	50	4.75	3.5	0.625	1.1
WMA50	50	6.125	4.0	0.625	1.21

Key: * = Not recommended for lifting, L = Length, W = Width, H = Height. All dimensions approximate.



Protractor: for 30, 45, 60, 75 and 90 degree angles

Arrow: for 45, 90 and 135 degree angles

Magnetic Welding Ground

Strong gripping power holds securely to ferrous metal work, providing positive ground for welding applications. Ideal for pipe that regular grounding clamps cannot grab.

- Spring-loaded stud keeps constant contact
- Copper stud provides 800 amps
- Handle rotates 360 degrees

Part No.	Pounds Pull	Dimensions (in)		Weight (lbs.)
		Dia.	H	
WMRB80	95	3.5	2.25	1.1

All dimensions approximate.



Ceramic & Alnico Magnetic Assemblies

Work holding assemblies are available in many sizes and magnetic strengths.



Each resists heat up to 600° F.

Bi-Polar Assemblies

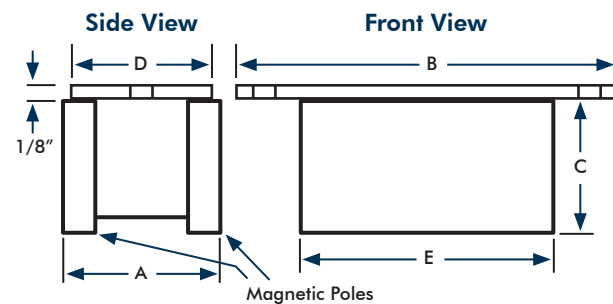
Align pieces during welding, hold items on paint racks and devices in industrial ovens or the oil industry. Built to handle excessive abuse and temperatures up to 600° F. Welded construction, painted black.

Part No.	Pounds Pull	Dimensions in Inches				
		A	B	C	D	E
1390A1C	40	0.875	3.25	1.375	0.75	2.0
1390A2C	55	1.25	3.25	1.375	1.0	2.0
1390A3C	65	0.875	5.25	1.375	0.75	3.875
1390A4C	120	1.25	5.25	1.375	1.0	3.875
1390A5C	250	1.875	5.25	2.125	1.75	3.875

Key: L = Length, W = Width, H = Height, PW = Pole Width, C = Clearance of magnet, D = Back plate width, E = Magnet length, F = Center to edge of magnet, G = Gap width, H = Hole size, I = Center to center of holes. All dimensions approximate.

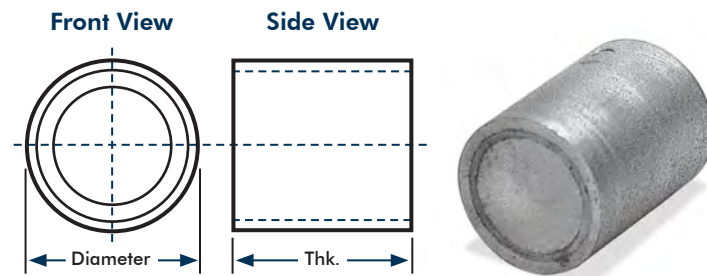


Each assembly features all-welded construction with stainless steel cover. In the example above, the magnet is mounted to a steel bar and used to lift metal machinery from a degreasing tank. Tolerant to high heat applications because no epoxy is used.



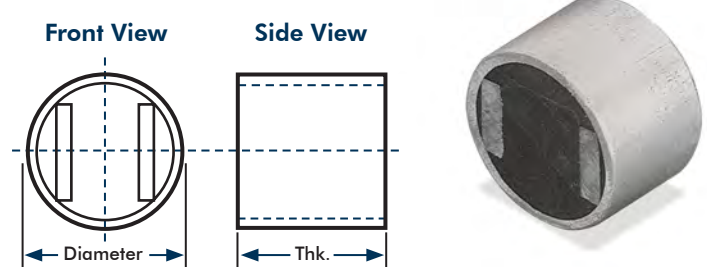
Alnico Assemblies

Alnico assemblies are most useful where heat is a factor. They withstand temperatures of 850° F without appreciable loss of power. They should be insulated with a non-ferrous sleeve such as aluminum or brass when pressed into steel. Listed below are the most common sizes we offer, though other sizes are available. Most available with or without tapped hole. Call for details.



Ceramic Assemblies

Ceramic assemblies use a ferrite magnet encased in an aluminum cup. They should not be used in temperatures greater than 180° F because of the epoxy. They can be pressed into steel without any further insulation. Most are available with or without a tapped hole. Other sizes available. Call for details.



Shielded Neodymium & Alnico Assemblies

Work holding magnets offer powerful solutions to various applications.



Part No.	Description	Pounds Pull	Dimensions in Inches	
			Diameter	Height
AAB2550BX	Alnico Magnet with Brass Shield	0.14	0.25	0.5
AAB505BX	Alnico Magnet with Brass Shield	0.225	0.5	0.5
AAB7575BX	Alnico Magnet with Brass Shield	1.25	0.75	0.75
NAA.25X.5BX	Neodymium Magnet in Aluminum Cup	0.70	0.25	0.5 with 6-32 tap
NAA.5X.5BX	Neodymium Magnet in Aluminum Cup	2.65	0.5	0.5 with 10-24 tap
NAA1X.5BX	Neodymium Magnet in Aluminum Cup	7.5	1.0	0.5 with 1/4-20 tap
NAA1X.75BX	Neodymium Magnet in Aluminum Cup	15.0	1.0	0.75 with 1/4-20 tap
NAA1.25X.75BX	Neodymium Multi-Pole Magnet in Aluminum Cup	26.0	1.25	0.75 with 5/16-18 tap
NAA2.5X1BX	Neodymium Magnet in Aluminum Cup	95.0	2.5	1.0 with a 1/4 hole - flat tap
NAA3X1BX	Neodymium Magnet in Aluminum Cup	145.0	3.0	1.0 with two 1/4 holes - flat tap
NAB2525BX	Neodymium Magnet with Brass Shield	1.25	0.25	0.25
NAB2550BX	Neodymium Magnet with Brass Shield	1.50	0.25	0.5
NAB3737BX	Neodymium Magnet with Brass Shield	5.0	0.375	0.375
NAB5025BX	Neodymium Magnet with Brass Shield	4.25	0.5	0.25
NAB505BX	Neodymium Magnet with Brass Shield	7.0	0.5	0.5
NAB7537BX	Neodymium Magnet with Brass Shield	13.0	0.75	0.375
RBN2P-.5BX	Neodymium 2-Pole Magnet in Steel Cup	8.0	0.5	0.5 with 10-32 tap
RBN2P-1BX	Neodymium 2-Pole Magnet in Steel Cup	46.0	1.0	0.5 with 1/4-20 tap

Alnico Holding Magnets

Powerful and resistant to high heat, center hole allows easy mounting.

Alnico 5 Holding Magnets

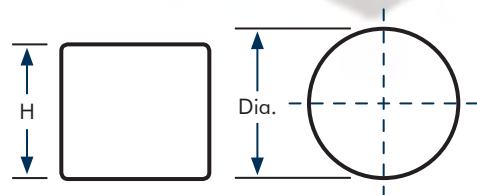
Alnico assemblies can be used in holding applications where heat is a factor. 1/4-20 thread for attaching, and each includes keeper to retain magnetic strength.

Part No.	Pounds Pull	Dimensions in Inches	
		Diameter	Height
AA1061	18	1.06	1.0
AA1371	35	1.375	1.187
AA6862	3.5	0.687	0.625
AA8175	10	0.812	0.75

All dimensions approximate.

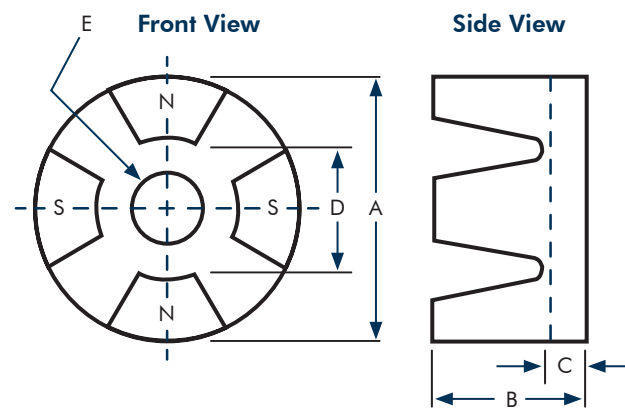
AA6862

AA1371



Alnico 5 Holding Magnets

Alnico holding magnets can be used in a variety of industrial and consumer applications. Center hole allows for easy mounting. Each includes keeper to retain magnetic strength when not in use.



AH83140

Part No.	Lbs. Pull	No. of Poles	Dimensions in Inches					Wgt. (Lbs.)
			A	B	C	D	E	
AH25H153MAG	5.0	2	0.687	0.687	0.344	0.344	1.187	0.052
AH2821N*	1.5	2	0.5	0.375	0.165	0.45	0.165	0.016
AH2822N*	4.0	2	0.75	0.5	0.27	0.7	0.218	0.05
AH2823C*	6.0	2	1.0	0.625	0.343	0.343	0.218	0.083
AH2823N*	6.0	2	1.0	0.625	0.312	0.933	0.23	0.121
AH2888MAG	9.0	2	0.875	0.875	0.437	0.406	0.25	0.101

Multiple Poles:

AH43136	16.0	4	1.0	0.75	0.25	0.5	0.25	0.102
AH63130MAG	25.0	6	1.25	0.75	0.25	0.625	0.25	0.163
AH63133	30.0	6	1.5	0.875	0.312	0.75	0.375	0.27
AH83140	65.0	8	2.0	1.25	0.375	1.0	0.5	0.702

Key: * = Painted red. All dimensions approximate and as cast with pole faces ground smooth. Other sizes may be available.

Separation Magnets

Useful for separating ferrous from non-ferrous materials in assembly lines and production sites.



This is an example of a custom made hopper grate using magnetic tubes. For use with very slow moving, free-flowing materials.

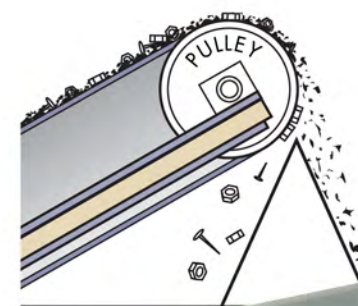
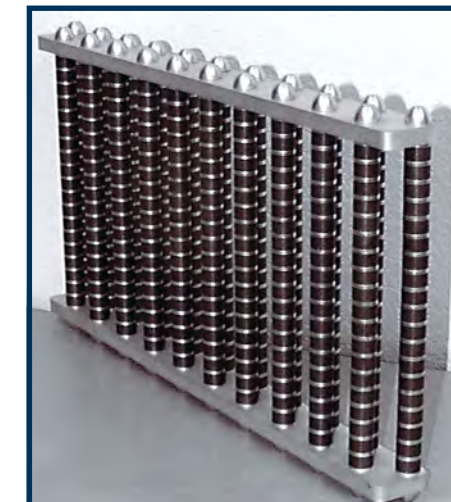
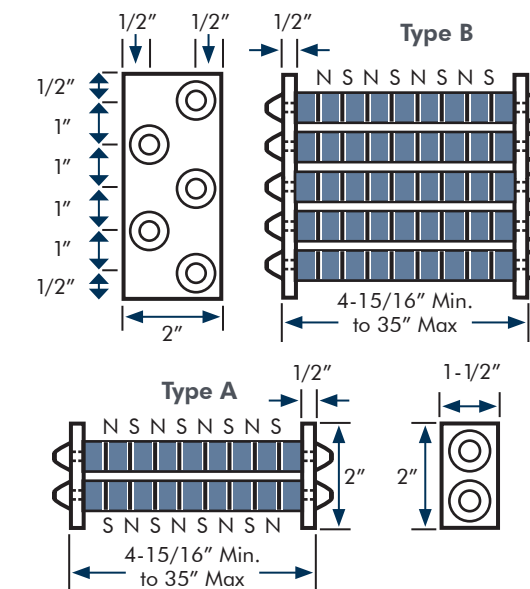
Request a quote online at magnetsource.com/pmmquote

Magnetic Tubes

High quality magnetic tubes are available for individual design of hopper grates or other magnetic applications. These 1" diameter magnetic tubes can be made with alnico, ceramic or rare earth magnet material, are manufactured to custom length, and sold by the inch. For use with very slow, free-flowing materials such as plastics, foods, cosmetics, grains and minerals. They also feature 1/4 - 20 tapped aluminum end plugs. Please call for a quote. Made to order.

Drop-In Magnetic Separators

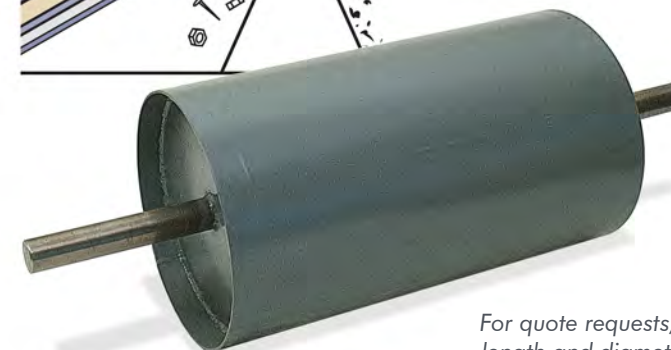
Drop-in magnetic separator filters, designed for fluid tanks and reservoirs, pull fine particles out of fluids and hold them until the unit can be cleaned and dropped back in. Used in tanks or other containers having low to moderate flows. Direct blast of fluids over unit is not recommended. Made to order.



Ferrous objects are held tightly until leaving the influence of the magnet.

Magnetic Pulleys

When material passes over the pulley, ferrous metal objects are attracted by the magnetic field and held tightly as the belt travels around the pulley. Objects are not released until they leave the influence of the magnet. Non-magnetic materials follow a normal trajectory. A divider plate can be installed to ensure that no remixing occurs. Standard diameters range from 6" to 36," and standard widths range from 10" to 62." Shaft size depends on length and weight.



For quote requests, please specify shaft length and diameter, pulley length and diameter, plus belt width. Request a quote online at magnetsource.com/pmmquote

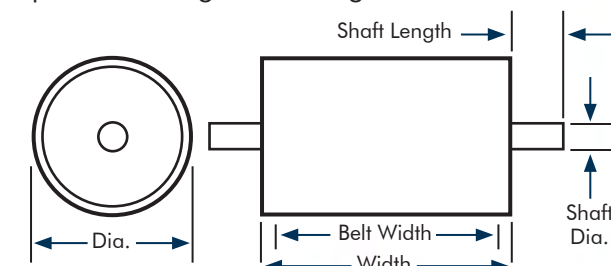


Plate Magnets

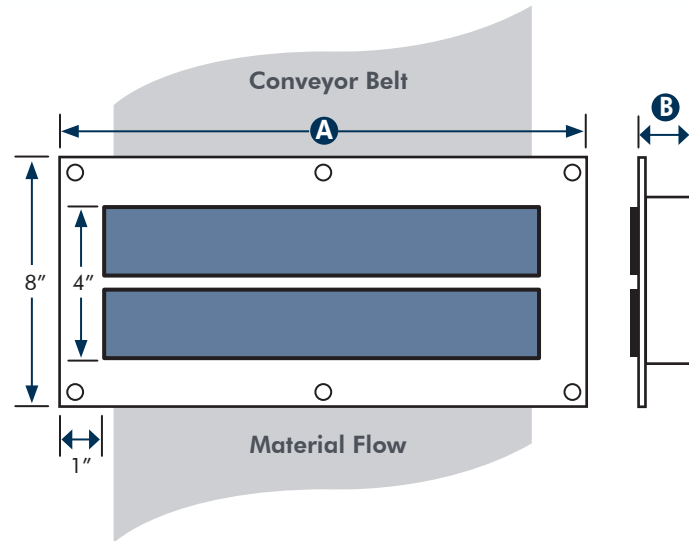
Remove tramp iron from free-flowing materials such as corn, sugar, flour, gravel and granular plastic.

Light Duty Plate Magnets

Can be installed in chutes or suspended above conveyor belts and pulleys for low volume, lightweight and/or slow-moving applications. These standard ceramic plate magnets are available in single gap design, and are offered in 1" thick (standard) or 1.5" thick (heavy duty) models. Also available with powerful rare earth magnets. Call us for more details.



Suspension Distance
Standard:
 1.5 inches
Heavy Duty:
 2.5 inches



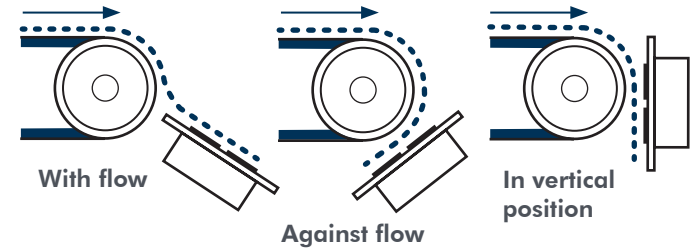
Model TG - Light Duty Plate Magnets

Part No.	A (inches)	B (inches)		Weight (lbs.)	
		Standard	Heavy Duty	Standard	Heavy Duty
TG8	8.0	1	1.5	5.6	7.5
TG12.5	12.5			8.4	11.25
TG16	16.0			11.2	15.0
TG25	25.0			16.8	22.5

Key: A = Overall length, B = Thickness. Suspension distance measurements are the maximum recommended. All dimensions approximate.

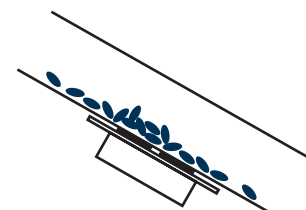
Typical Arrangements

At discharge of belt conveyor (side view):



Gravity Chutes

When installing the magnet in a chute, we recommend cutting the hole to 5" wide by 1" less than the overall length of the magnet.

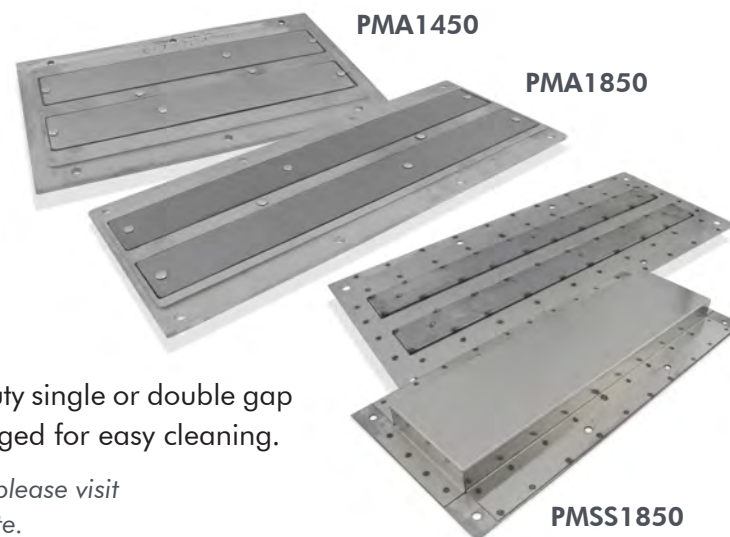


Model PM - Light Duty Plate Magnets

Similar specifications to the TG models.

Part No.	Dimensions in Inches			Weight (lbs.)
	Width	Length	Height	
PMA1450	14.5	6.5	1.25	12.5
PMA1850	18.5	5.625		15.84
PMSS1850*	18.5	5.0		15.84

Key: * = Comes with stainless steel housing. All dimensions approximate.



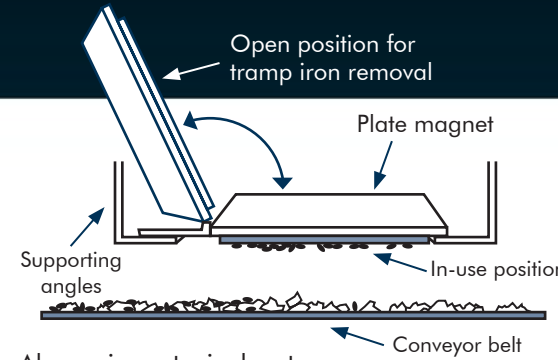
Heavy Duty Plate Magnets

For more length and depth of magnetic pull, try our heavy duty single or double gap plate magnets on the following page. These models are hinged for easy cleaning.

For detailed information or request a quote on any plate magnet, please visit the Industrial Magnetic Solutions and Devices section of our website.

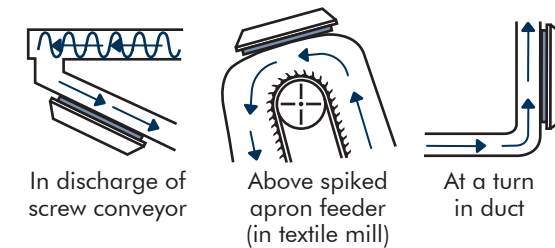
Heavy Duty Plate Magnets

Available with powerful ceramic or rare earth magnets.

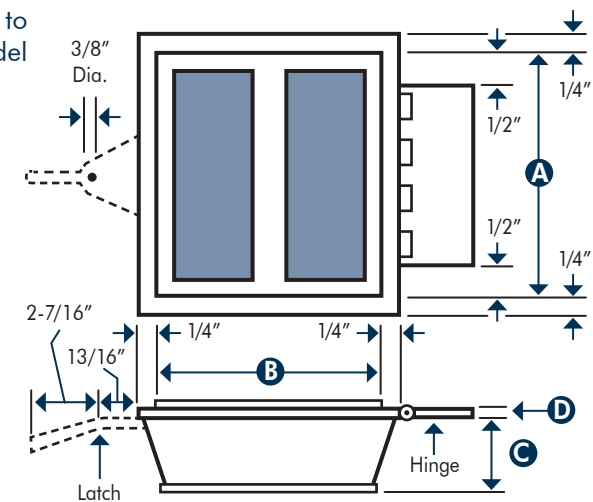


Above is a typical setup for heavy duty plate magnet. Positive tramp iron removal is accomplished when plate magnets are suspended over chutes, belts, spiked apron feeders and conveyers. Hinge allows unit to be lifted for easy cleaning.

Typical Arrangements



Single gap model is shown to the right (double gap model dimensions are identical to single gap except for "B" - see chart below). Other sizes are available.



Heavy Duty Model 15

Suspension Distance
 1.5 - 2.0 inches

A (inches)	B (inches)		C (inches)	D (inches)	Weight (lbs.)	
	Single	Double			Single	Double
6					9	16
8					12	22
10					15	27
12					18	33
14					21	38
16					23	44
18	6	11	1.31	0.125	26	49
20					29	55
24					35	66
30					44	83
36					53	100
42					62	116
48					70	132

Heavy Duty Model 25

Suspension Distance
 2.5 - 3.0 inches

A (inches)	B (inches)		C (inches)	D (inches)	Weight (lbs.)	
	Single	Double			Single	Double
6					13	25
8					18	34
10					22	43
12					27	52
14					32	61
16					36	70
18	8	15	1.43	0.125	41	79
20					46	88
24					55	106
30					69	133
36					83	160
42					97	186
48					111	213

Heavy Duty Model 35

Suspension Distance
 3.5 - 4.0 inches

A (inches)	B (inches)		C (inches)	D (inches)	Weight (lbs.)	
	Single	Double			Single	Double
6					19	36
8					26	49
10					32	62
12					39	76
14					46	89
16					53	102
18	8	15	2.25	0.125	60	115
20					66	128
24					80	154
30					100	194
36					121	233
42					142	272
48					162	319

Heavy Duty Model 45

Suspension Distance
 4.5 - 5.0 inches

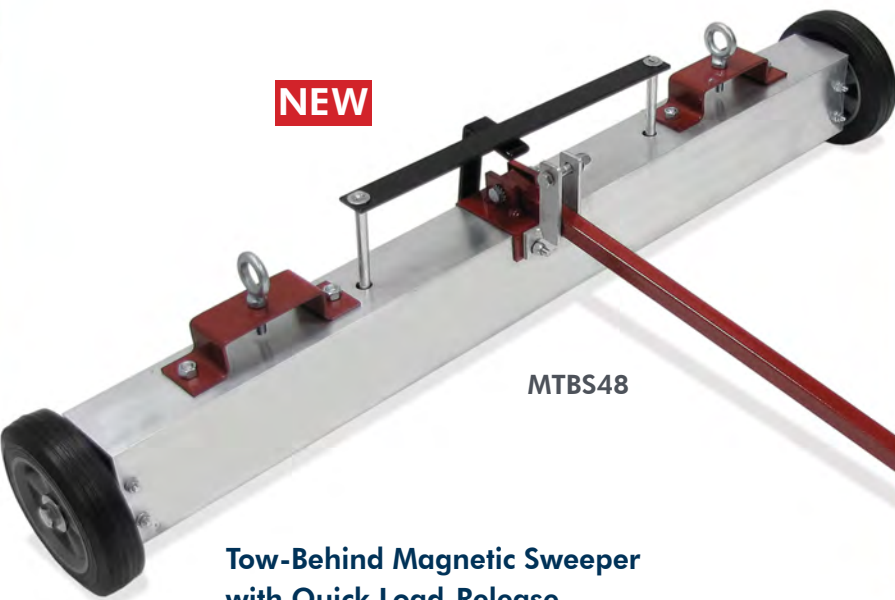
A (inches)	B (inches)		C (inches)	D (inches)	Weight (lbs.)	
	Single	Double			Single	Double
6					40	76
8					54	103
10					68	130
12					82	158
14					96	185
16					111	210
18	10.5	20	3.812	0.187	125	239
20					139	266
24					167	322
30					210	403
36					252	485
42					295	570
48					338	651

Key: A = Width of live area, B = length of live area, C = Thickness of magnet assembly, D = Pole face clearance. All dimensions approximate.

Tow-Behind Multi-Use Magnetic Sweeper

3-in-1 Sweeper with towing, hanging and mounting options.

NEW

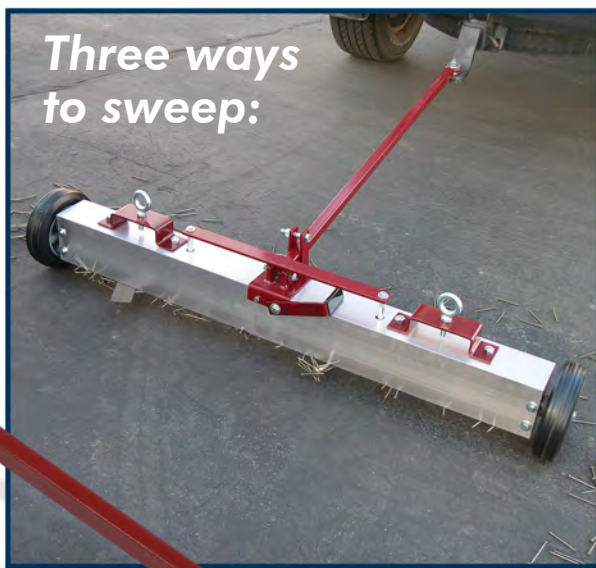


MTBS48

Tow-Behind Magnetic Sweeper with Quick Load-Release

Our newest magnetic sweeper can be used in three different configurations. Clear driveways, factory aisles, trucking terminals, parking lots, construction sites and more. Works over any terrain, in any weather condition. Minimal assembly required.

- Tow from a variety of vehicles
- Quick load-release feature for easy cleaning
- Built with heavy gauge steel and aircraft-grade aluminum housing
- 8" diameter wheels provide 3" ground clearance
- Removable handle for suspension mounting
- Also available in widths of 60", 72", 84" and 96" - call for lead time



Three ways to sweep:

1

Tow behind Vehicle



2

Mount on Forklift



3

Hang from Vehicle

Part No.	Dimensions in Inches			Approx. Lbs. Pull	Shipping Weight
	Magnet Width	Overall Width	Surface Area		
MTBS48	48	55	192 sq. in.	250	72 lbs.
MTBS60	60	67	240 sq. in.	300	82 lbs.
MTBS72	72	79	288 sq. in.	350	92 lbs.
MTBS84	84	91	326 sq. in.	400	105 lbs.
MTBS96	96	103	364 sq. in.	450	112 lbs.

Tube size = 4" x 5" Tow bar length = 46" Operating speed = 3 to 5 mph, depending on surface.

Note: All sweepers are designed for attracting ferrous metal pieces and debris. The pounds pull rating is for the purpose of magnetic strength comparisons only, and measured by a vertical pull test from a 0.5" thick ground steel plate.

Push-Type Magnetic Sweepers

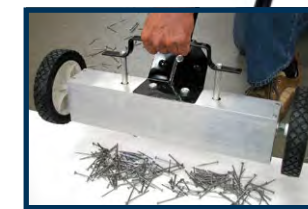
Collect dangerous scattered metal materials, keeping work, traffic and outdoor areas safe.

Magnetic Push-Type Sweepers with Quick Load-Release

(Left) Heavy duty sweepers have 24" and 14" sweeping widths, 48" sturdy handle and 6" diameter rubber wheels. Quickly drop collected scrap metal by pulling back on the release handle. Some assembly required. The 18" wide floor sweeper has 0.5" to 2.5" adjustable sweeping height.



Pull lever to release items.



MFSM24RX

07543

Magnetic Push-Type Sweepers

(Right) These models are incredibly strong and well built. Powerful ceramic magnets are encased in a durable aluminum housing which can be cleared of collected debris with work gloves or heavy shop towel. Easy to operate over most terrain – even in water! Sturdy, one-piece handle attaches easily.



MFSM12

MFSM36

36" wide model has attached eyebolts for easy conversion to hanging sweeper.



Part No.	Dimensions in Inches			8-Penny Nail Pick Up Test	Approx. Lbs. Pull	Shipping Weight
	Sweeping Width	Overall Width	Handle Height*			
MFSM12	12	16.5	42	3.75 lbs. (340 pcs.)	80.0	17 lbs.
MFSM24	24	28.5	42	7.5 lbs. (680 pcs.)	160.0	27 lbs.
MFSM36**	36	40.5	42	11.25 lbs. (1,023 pcs.)	240.0	41 lbs.
07543	18	22.5	44	4.1 lbs. (372 pcs.)	97.5	12 lbs.
MFSM14RX	14	15.125	42	3.0 lbs. (300 pcs.)	233.0	21 lbs.
MFSM24RX	24	30.25	42	6.0 lbs. (600 pcs.)	400.0	41 lbs.

The sweepers below feature quick load-release handle for clearing collected materials.

Key: * = Handle height measured from assembly to top of handle, ** = Includes 2 eyebolts for hanging. All dimensions approximate.

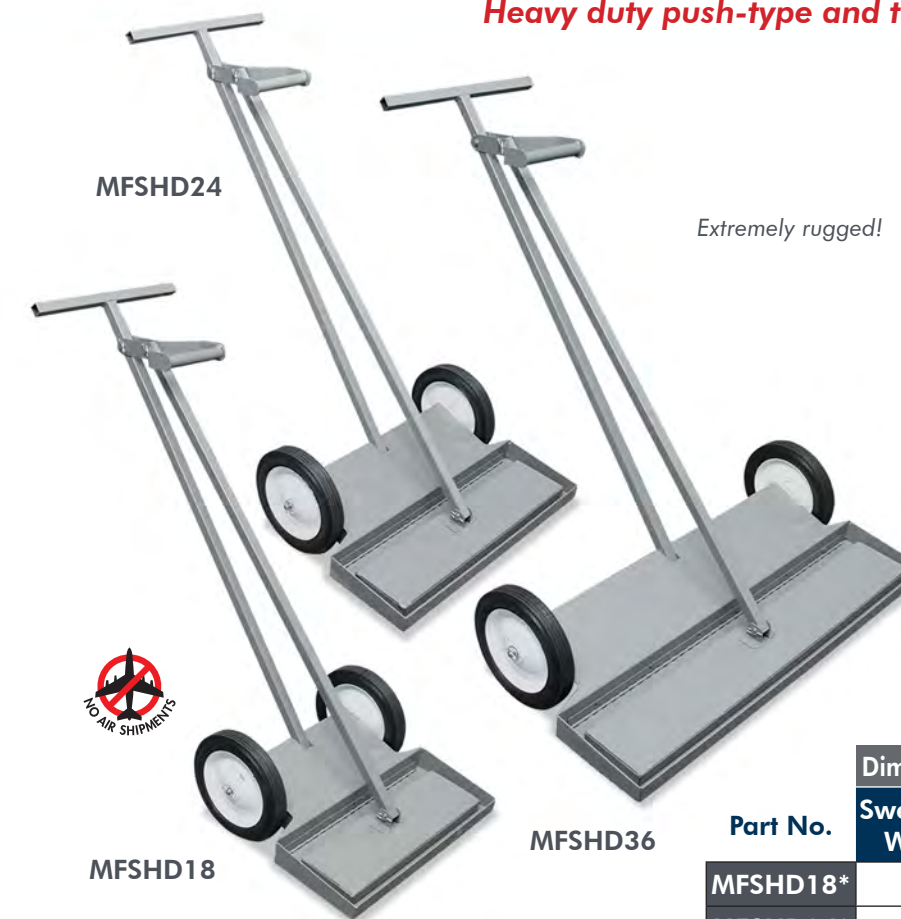
Note: All sweepers are designed for attracting ferrous metal pieces and debris and are not designed for lifting heavy objects. The pounds pull rating is for the purpose of magnetic strength comparisons only, and measured by a vertical pull test from a 0.5" thick ground steel plate.

Hang-Type Magnetic Sweepers

Magnetic Sweepers

Clear parking lots and driveways of ferrous metal debris, or work on rough terrain and wet surfaces.

Heavy duty push-type and trailer-type sweepers for all kinds of terrain.



Hang-Type Sweepers

Hang from your forklift or vehicle bumper and "sweep" all areas. Clear the face of the magnet with a glove or heavy shop towel. Two eyebolts are installed for mounting. Each is 1.75" H x 5" D.

Hang-Type Sweepers with Release

Hang from forklift and secure with eyebolts (included). To unload, pull the release handle. As the magnet rises, collected material is released from the collector plate. Each is 4" H x 3" D.

Part No.	Dimensions in Inches		8-Penny Nail Pick Up Test	Approx. Lbs. Pull	Shipping Weight
	Magnetic Surface Area	Sweeping Width			
MRS18	60 sq. in.	18	8 lbs. (725 pcs.)	160	12 lbs.
MRS24	120 sq. in.	24	11 lbs. (1,000 pcs.)	213	23 lbs.
MRS36	180 sq. in.	36	16 lbs. (1,445 pcs.)	320	36 lbs.
MRS48	240 sq. in.	48	22 lbs. (2,000 pcs.)	426	49 lbs.
MRS72	360 sq. in.	72	33 lbs. (3,000 pcs.)	640	79 lbs.
MRS78	390 sq. in.	78	36 lbs. (3,270 pcs.)	695	80 lbs.
MRS84*	570 sq. in.	84	39 lbs. (3,545 pcs.)	745	86 lbs.
MRS96*	780 sq. in.	96	44 lbs. (4,000 pcs.)	855	100 lbs.

The sweepers below feature quick load-release handle for clearing collected materials.

MRHS36RXC	108 sq. in.	36	7.1 lbs. (645 pcs.)	330	17 lbs.
MRHS48RXC	144 sq. in.	48	9.4 lbs. (855 pcs.)	440	23 lbs.

Key: * = These models should be shipped by truck, others may ship by a ground parcel service. Maximum recommended operating speed: 5 mph. Recommended sweeping height: 2 to 4 inches.



Hang MRS Series sweepers from a vehicle or forklift. Add your own chains with S-hooks or hanging bar (not included).



Super Heavy Duty, Push-Type Magnetic Sweepers with Release

Designed for long wear and durability. Each includes load-release lever. Back-mounted wheels are protected from debris and provide easy access to corners. Ideal for construction companies or rental shops. Some assembly required. 42" long handle.

Extremely rugged!

Part No.	Dimensions in Inches		8-Penny Nail Pick Up Test	Approx. Shipping Weight
	Sweeping Width	Overall Width		
MFSD18*	18	20.25	7.5 lbs. (680 pcs.)	290
MFSD24*	24	26.25	10.0 lbs. (900 pcs.)	385
MFSD36*	36	38.0	15.0 lbs. (1,365 pcs.)	580

Key: * = These models should be shipped by truck, others may ship by a ground parcel service.

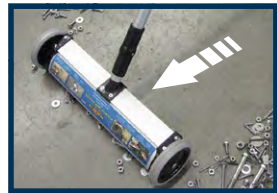


Trailer-type sweepers make a clean sweep on big jobs!

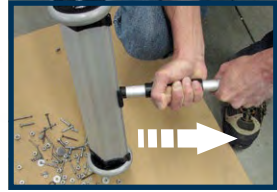
Part No.	Dimensions in Inches				Approx. Shipping Weight
	Sweeping Width	Overall Width	Overall Depth	Overall Height	
MRS172	72	84	56	27	650 lbs.
MRS196	96	111	56	27	800 lbs.

Trailer-Type Magnetic Sweepers

With six or eight foot sweeping widths, they quickly clear tramp iron from streets, construction sites, runways, steel mills, welding sites and more, over smooth or unpaved surfaces, wet or dry! The heavy .375" x 2" steel frame with adjustable hitch withstands the roughest conditions. They are designed to operate at road speeds up to 50 mph between jobs, and up to 10 mph during sweeping. Each sweeper has two large, heavy-duty magnets which have 90 lbs. pull each. Releasing collected metal is easy. Simply pull the lever, and the load is released from the stainless steel collecting plate into the carrying pans.



Roll over scattered ferrous metal to collect it...



...pull back on handle to release.

A. & B. Magnetic Mini Sweepers

Pick up nails, screws or any other small ferrous metal items. Clear collected debris with work gloves or a heavy shop towel. Choose from 14.5" or 27" sweeping width. Handle includes convenient hanging hole.

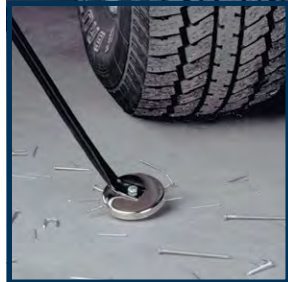
C. Magnetic Mini Sweeper with Release

Roll over scattered screws, nails and bolts, then a simple slide of the handle drops collected scrap metal into dumping area. 40" long handle retracts to 27".

Part No.	Dimensions in Inches			8-Penny Nail Pick Up Test	Weight (lbs.)
	Sweeping Width	Overall Width	Handle Height*		
07263	14.5	17.0	41	1.60 lbs. (225 pcs.)	3.0
07265	27.0	30.0	41	2.35 lbs. (325 pcs.)	5.3
07294	13.0	15.5	27 to 40	1.60 lbs. (225 pcs.)	4.0

Key: * = Handle height measured from assembly to top of handle. All dimensions approximate.

Magnetic pick up tools are handy for clearing metal pieces and tools from underneath vehicles and workbenches.



A. Magnetic Pick-Up Pal™

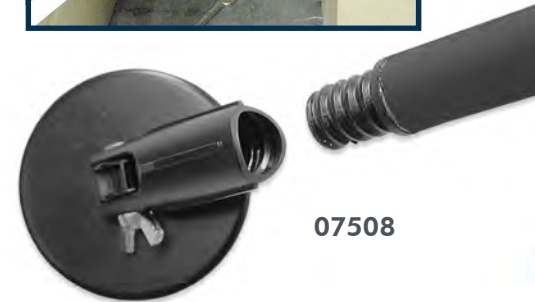
Contains neodymium. Remove collected debris with shop towel or work gloves.

B. Extendable Magnetic Pick-Up Pal™

Twist and extend to retrieve hard-to-reach items. Compact size allows easy storage.

Part No.	Pounds Pull	Dimensions (in)		Weight (lbs.)
		L	Extend to	
07247	65	36	-	1.05
07547	65	24	40	0.85

Key: L = Length, W = Width, H = Height, * = Height includes handle. All dimensions approximate.



Magnetic Pick-Up Tool Attachment

Attach an acme-threaded standard broom handle to this pre-threaded magnetic base. Use the wing nut to adjust the handle angle to desired position. 65 lbs. pull.

Magnetic Parts Trays

Keep loose nuts, screws and other small metal items in reach. Smooth stainless steel trays have powerful ceramic magnets with rubber covers in the base to secure them to a metal toolbox or table while keeping important metal pieces at hand. Ideal for mechanics, craftsmen and hobbyists.

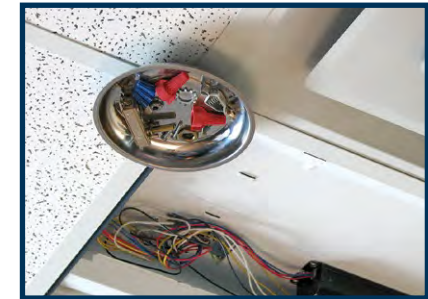
- Works in any position - flat, sideways or upside down
- Heavy gauge, stainless steel with rubber base to prevent scratching
- Great for jobsite, garage, office and home

Part No.	Dimensions in Inches		
	L	W	H
07684	6.0 (Diameter)		1.5
07685	9.5	5.6	1.5
07686	14.0	6.25	1.5

Key: L = Length, W = Width, H = Height. All dimensions approximate.



Rubber magnet covers prevent surface scratches, yet magnetism remains strong.



Parts stay in place, even upside down!



Keep metal tools and parts handy.

Gaussmeter

The DC Gaussmeter is a very accurate instrument useful in measuring the DC magnetic field intensity of magnets, magnetic devices and assemblies, plus relays, electromagnets, motors, generators, loudspeakers, actuators, ferrite content in non-ferrous materials and more!



Easily measure the DC Magnetic Field Intensity (Magnetic Flux Density) of any magnet.

Typical applications include magnet classification, analysis of magnetic circuitry and components, air shipment inspection, measurements of the earth's field vectors, mapping and recording field perturbations, Magnetic Resonance Imaging (MRI) and measuring residual fields. **GM-2**



Magnetic Pole Indicators

Simply point the North-South pole indicator toward the magnet and read the pole letter in the viewing hole. **POLEIND01**
The electronic North-South pole indicator features LED lights to identify pole locations. Includes pocket clip, on/off switch and 4 LR44 batteries. **POLEIND02**

Water Treatment Magnets

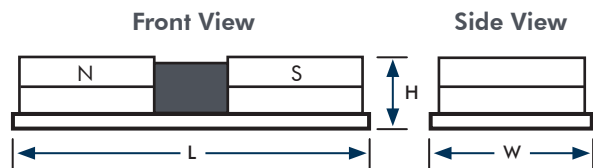
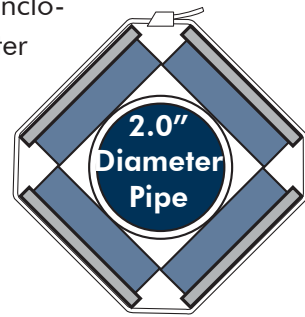
Magnetic treatment of water helps reduce "hardness" caused primarily by calcium and magnesium.



Water treatment magnets can prevent deposits of minerals on the inside of the pipe walls, and descale the existing buildup of solids. Although treatment begins when the magnets are installed, descaling can take as long as six months in heavily crusted pipes. Magnetized water is softer and cleaner.

These magnets are specifically designed for installation on various pipe sizes that range from 0.25" to 8.0" in diameter. They can be used on copper, plastic or steel pipes, and can be applied directly to a pipe or housed in a more marketable enclosure.

For producers of finished, marketable water treatment units, please call one of our magnet application experts to determine the magnet best suited for your design.



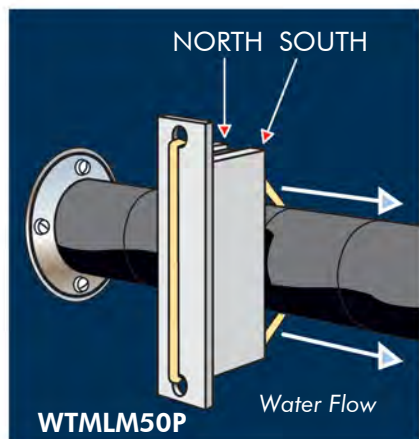
Side view of magnet arrangement is shown above. Secure magnets with wire, string, duct tape, hose clamps or plastic zip ties.

Part No.	Pipe Size (dia., in.)	Magnets Needed	Dimensions in Inches			Typical Applications
			L	W	H	
WTM4	0.75 - 1.0	1 - 2	4.5	1	1.0	Private Residences
WTM802	2.0	4	7.0	2	0.68	Agricultural Pipe, Car Washes, Spas
WTM1863	3.0	4	7.0	2	1.25	Factories, Hospitals, Mines, Boilers
WTM186	6.0	8	13.0	2	1.25	Steel Fabricators, Public Pools, Cooling Towers
WTM186X2	8.0	12	13.5	2	2.37	Industrial Drainage, Sewage Treatment Outlet Pipes

The magnets should be installed on the pipe between the main valve and the water heater.

A secondary unit should be installed on pipe that exits the water heater.

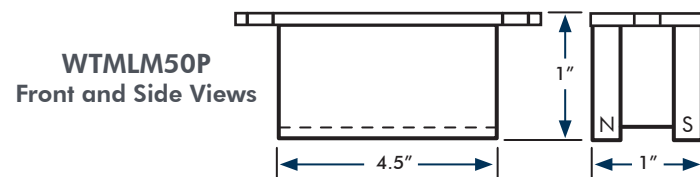
Below is an example of water flow into an ice machine.



Small Pipe Water Treatment Magnet

The WTMLM50P water treater is for all pipes up to 0.75" in diameter. The south pole of the magnet is designated with an "S". Water flow direction should be from north magnetic pole to south magnetic pole. The illustration to the left shows the proper application of this magnet to the pipe. Attach using wire, string, duct tape, zip ties or hose clamp. Ideal applications include ice machines, water coolers and instant water heaters. 4.5" L x 1.0" W x 1.0" H.

Water must pass through the magnetic field from north to south.



Name Badge, Picture Hanger, Clip & Hook Magnets



Name Badge Magnets

Never again use clips or pins to hold that name badge to your valuable garments. Our name badge magnets will not leave holes, tears or other damage to the fabric, and are easy to use. Neodymium magnets offer tremendous holding power.

Part No.	Dimensions in Inches		
	Width	Length	Thk.
NP07	0.5	1.75	0.25
NP08	0.6875 dia.		0.1875
NP09	0.5	1.8	0.25

Magnetic Picture Hangers

The most convenient way to hang framed pictures, certificates or notices on steel partitions and cabinets. No holes to drill or nails to damage the walls. Support 1.5 lbs. to 50 lbs.

Part No.	Pounds Pull	Dimensions in Inches		Weight (lbs.)	Color
		L	W		
MHCPH015	1.5	1.5	2.0	0.05	Beige
MHCPH025	2.5	2.0	3.0	0.11	Beige
MHCPH050	5.0	3.0	4.0	0.203	Beige
MHCPH100	10.0	3.0	7.0	0.38	Beige
MHCPH101	10.0	3.25	6.125	0.38	Grey
MHCPH150	15.0	4.0	7.0	0.44	Beige
MHCPH250	24.0	6.0	9.0	0.88	Beige
MHCPH500	50.0	9.0	12.0	1.69	Beige



Magnetic Clips, Cable and Coat Hooks

Clips hold wiring, cords, memo pads and invoices. Cable hook holds phone and computer cords neatly to steel desks and partitions. Hang coats, jackets, hats and umbrellas from any steel surface with powerful single or double coat hooks. Remove or reposition with no holes or adhesive.

Part No.	Pounds Pull	Dimensions in Inches		Weight (lbs.)
		L	W	
MHMC015	1.5	1.5	2.0	0.06
MHMC030	3.0	1.0 Diameter		0.05
MHCC015B	1.5	1.5	2.0	0.06
MH100	10.0	7.625	3.125	0.44
MHCH100	10.0	7.625	3.125	0.41

Magnetic Label / Document Holders & Pouches

Simple solutions for identifying file cabinets, posting photos and storing frequently used supplies.

Flexible Magnetic Label Holders

Clear, non-acidic plastic sleeves with white vinyl and full magnetic backing. Ideal for labeling inventory and records in warehouses, schools and offices that have ferrous metal shelving and cabinets. Print or handwrite your own labels, insert them in the sleeve and post where needed. Also use for photos and schedules. Easily change and reposition.



Organize warehouse shelving, post schedules or display photos.



Part No.	Dimensions in Inches	
	L	W*
ZGPHP1X4MW-C	1.0	4
ZGPHP2X4MW-C	2.0	4
ZGPHP3.5X5MW-C	3.5	5
ZGPHP4X6MW-C	4.0	6
ZGPHP8.5X11MW-C**	8.5	11

Key: * = Sleeve opening is along the width, ** = Holds standard letter-sized documents.

Magnetic Pouches

Each clear, 3D, soft pouch has full powerful magnetic backing. Keep objects at hands' reach and organized in the warehouse, workshop or office. Magnetically attracts to any flat ferrous metal surface.



Magnetic Pouches are ideal for use in the office, home, classroom or warehouse.

Part No.	Dimensions in Inches		
	W	H	Thk.
ZGPOUCH02	4.75	4.0	0.5
ZGPOUCH03	4.75	6.5	0.385
ZGPOUCH04	6.5	6.5	0.375
ZGPOUCH05	9.5	12.0	0.5



Each pouch has full magnetic backing.

Choose from three types: Slide it, stick it or write on it.

Magnetic Inventory Labels

Organize and label shelving and storage areas with repositionable magnets!

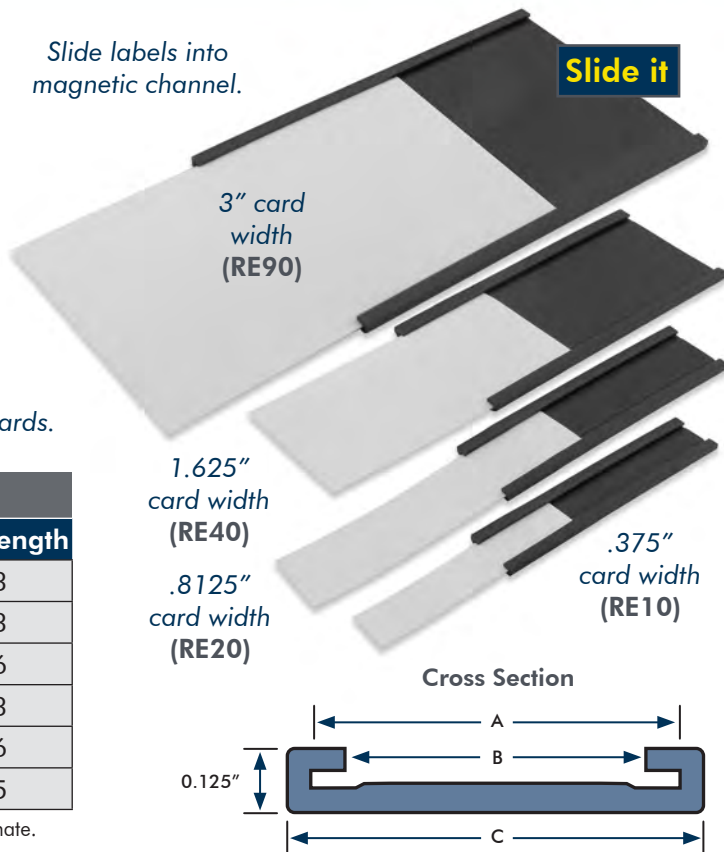
Flexible Magnetic Data Card Holder Kits

Slide labeling into one of these pre-formed magnetic channels. They're designed to hold pre-printed or handwritten inventory labels that can be paper thin up to 1/32" thick. Use to hold data cards that contain important product information such as part numbers, descriptions, etc. Attract to metal shelving units, desks, walls, doors and more! Available for four different card widths.

Each kit contains 25 pre-cut magnets and 35 pre-cut paper data cards.

Kit Part No.	Dimensions in Inches			
	A	B	C	Cut Length
RE10CUT3BXS01	0.4	0.32	0.475	3
RE20CUT3BXS01	0.825	0.65	0.95	3
RE20CUT6BXS01	0.825	0.65	0.95	6
RE40CUT3BXS01	1.7	1.475	1.83	3
RE40CUT6BXS01	1.7	1.475	1.83	6
RE90CUT5BXS01	3.0	2.862	3.125	5

Key: A = Channel width, B = View area, C = Overall width. All dimensions approximate.



Write on it



Stick it



Stick it

Flexible Magnetic Strip with Vinyl Coating

A quick and easy way to label metal shelves and cabinets. Write the information or data on the vinyl side of the magnet. Magnetism is on the other side.

Part No.	Dimensions in Inches		
	Thk.	W	L
ZG03040W/WKS	0.03	1.0	200 ft. Roll
ZG03080W/WKS	0.03	2.0	200 ft. Roll
ZG03090W/WKS	0.03	3.0	200 ft. Roll
ZG40W/WKS	0.06	0.5	100 ft. Roll
ZG40Y*	0.06	1.5	100 ft. Roll

Key: W/WKS = White vinyl coating on weak side, * = Yellow vinyl coating on weak side.

Standard Flexible Magnetic Strip

Affix computer-generated or handwritten labels with product information to the non-magnetic (grooved) side. Magnetism is on the other side.

Part No.	Dimensions in Inches		
	Thk.	W	L
ZG10AC	0.06	0.5	100 ft. Roll
ZG40AC		1.0	
ZG40S3.5*		1.0	
ZG60		1.5	
ZG80		2.0	
ZG90AC		3.0	

Key: AC = Adhesive Backing, * = Scored every 3.5".

Magnetic Strength Pull Test Methodology

We rate our magnetic assemblies by pounds of pull in a vertical test. Each magnet's entire magnetic surface is tested against a 1/2" thick ground steel plate. If the item you wish to lift is thinner than 1/2," is not ground flat, or does not cover the entire magnetic surface, actual holding capacity could be much lower. Painted surfaces also tend to reduce tested strengths.

U.S.A. and International MASTER MAGNETICS, INC.

747 S. Gilbert St., Castle Rock, CO 80104
Toll-Free: 1.888.293.9399 • Colorado: 303.688.3966
Fax: 1.800.874.6248
magnetsource.com

California and Hawaii A-L-L MAGNETICS, INC.

2831 Via Martens, Anaheim, CA 92806
Toll Free: 1.800.262.4638 • Local: 714.632.1754
Fax: 714.632.1757
allmagnetics.com

Florida MIAMI MAGNET CO.

781 Shotgun Road, Sunrise, FL 33326
Toll Free: 1.800.222.7846
Local: 954.473.1630 • Fax: 954.473.1635
magnetsource.com

 linkedin.com/company/master-magnetics

 facebook.com/MasterMagnetics

 youtube.com/MasterMagnetics



E-mail us at:
sales@magnetsource.com

Share your magnetic story or idea
with us at our Facebook page:
facebook.com/MasterMagnetics

MASTER MAGNETICS, INC.
THE MAGNET SOURCE™

Your Best Source in the Magnetic Field